

Recombinant Human SKA1 Protein, Myc/DDK-tagged, C13 and N15-labeled

Cat. No. SKA1-1520H **Lot. No.** (See product label)

SPECIFICATION

Product Overview	SKA1 MS Standard C13 and N15-labeled recombinant protein (NP_659497) with a C-terminal MYC/DDK tag, was expressed in HEK293 cells.
Species	Human
Source	HEK293
Description	SKA1 (Spindle And Kinetochore Associated Complex Subunit 1) is a Protein Coding gene. Diseases associated with SKA1 include Adenoid Cystic Carcinoma and Acute Poststreptococcal Glomerulonephritis. Among its related pathways are Signaling by GPCR and Mitotic Prometaphase. Gene Ontology (GO) annotations related to this gene include microtubule binding.
Molecular Mass	29.5 kDa
AA Sequence	<p>MASSDLEQLCSHVNEKIGNIKKTLSLRNCGQEPTLKTVLNKIGDEIIVINELLNKLELEI QYQEQTNNSLKELCESLEEDYKDIEHLKENVPSHLPQVTVTQSCVKGSDLDPEEPIK VEEPEPVKKPPKEQRSIKEMPFITCDEFNGVPSYMKSRILTYNQINDVIKEINKAVISKY KILHQPCKSMNSVTRNLYHRFIDEETKDTKGRYFIVEADIKEFTTLKADKKFHVLLNIL RHCRRLLSEVRGGGLTRYVITTRTRPLEQKLISEEDLAANDILDYKDDDDKV</p>
Purity	> 80% as determined by SDS-PAGE and Coomassie blue staining
Stability	Stable for 3 months from receipt of products under proper storage and handling

 Tel: 1-631-559-9269 1-516-512-3133

 Email: info@creative-biomart.com  Fax: 1-631-938-8127

 45-1 Ramsey Road, Shirley, NY 11967, USA

conditions.

Storage Store at -80 centigrade. Avoid repeated freeze-thaw cycles.

Concentration 50 µg/mL as determined by BCA

Storage Buffer 100 mM glycine, 25 mM Tris-HCl, pH 7.3.

GENE INFORMATION

Gene Name SKA1 spindle and kinetochore associated complex subunit 1 [Homo sapiens (human)]

Official Symbol SKA1

Synonyms SKA1; spindle and kinetochore associated complex subunit 1; C18orf24, chromosome 18 open reading frame 24; spindle and kinetochore-associated protein 1; MGC10200; spindle and KT (kinetochore) associated 1; C18orf24;

Gene ID 220134

mRNA Refseq NM_145060

Protein Refseq NP_659497

MIM 616673

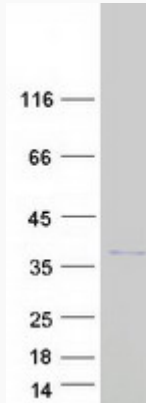
UniProt ID Q96BD8

 Tel: 1-631-559-9269 1-516-512-3133

 Email: info@creative-biomart.com  Fax: 1-631-938-8127

 45-1 Ramsey Road, Shirley, NY 11967, USA

SDS-PAGE



 Tel: 1-631-559-9269 1-516-512-3133

 Email: info@creative-biomart.com  Fax: 1-631-938-8127

 45-1 Ramsey Road, Shirley, NY 11967, USA