

# Recombinant Human SKA1 Protein, Myc/DDK-tagged, C13 and N15-labeled

**Cat. No.** SKA1-878H    **Lot. No.** (See product label)

## SPECIFICATION

<b>Product Overview</b>	SKA1 MS Standard C13 and N15-labeled recombinant protein (NP_001034624) with a C-terminal MYC/DDK tag, was expressed in HEK293 cells.
<b>Species</b>	Human
<b>Source</b>	HEK293
<b>Description</b>	SKA1 (Spindle And Kinetochore Associated Complex Subunit 1) is a Protein Coding gene. Diseases associated with SKA1 include Adenoid Cystic Carcinoma and Acute Poststreptococcal Glomerulonephritis. Among its related pathways are Signaling by GPCR and Mitotic Prometaphase. Gene Ontology (GO) annotations related to this gene include microtubule binding.
<b>Molecular Mass</b>	29.5 kDa
<b>AA Sequence</b>	<p>MASSDLEQLCSHVNEKIGNIKKTLSLRNCGQEPTLKTVLNKIGDEIIVINELLNKLELEI            QYQEQTNNSLKELCESLEEDYKDIEHLKENVPSHLPQVTVTQSCVKGSDLDPEEPIK            VEEPEPVKKPPKEQRSIKEMPFITCDEFNGVPSYMKSRILTYNQINDVIKEINKAVISKY            KILHQPCKSMNSVTRNLYHRFIDEETKDTKGRYFIVEADIKFTTLKADKKFHVLLNIL            RHCRRLLSEVRGGGLTRYVITTRTRPLEQKLISEEDLAANDILDYKDDDDKV</p>
<b>Purity</b>	> 80% as determined by SDS-PAGE and Coomassie blue staining
<b>Stability</b>	Stable for 3 months from receipt of products under proper storage and handling

 Tel: 1-631-559-9269    1-516-512-3133

 Email: [info@creative-biomart.com](mailto:info@creative-biomart.com)     Fax: 1-631-938-8127

 45-1 Ramsey Road, Shirley, NY 11967, USA

conditions.

**Storage** Store at -80 centigrade. Avoid repeated freeze-thaw cycles.

**Concentration** 50 µg/mL as determined by BCA

**Storage Buffer** 100 mM glycine, 25 mM Tris-HCl, pH 7.3.

## GENE INFORMATION

**Gene Name** SKA1 spindle and kinetochore associated complex subunit 1 [ Homo sapiens (human) ]

**Official Symbol** SKA1

**Synonyms** SKA1; spindle and kinetochore associated complex subunit 1; C18orf24, chromosome 18 open reading frame 24; spindle and kinetochore-associated protein 1; MGC10200; spindle and KT (kinetochore) associated 1; C18orf24;

**Gene ID** 220134

**mRNA Refseq** NM\_001039535

**Protein Refseq** NP\_001034624

**MIM** 616673

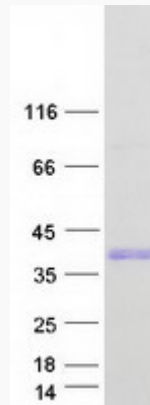
**UniProt ID** Q96BD8

 Tel: 1-631-559-9269 1-516-512-3133

 Email: [info@creative-biomart.com](mailto:info@creative-biomart.com)  Fax: 1-631-938-8127

 45-1 Ramsey Road, Shirley, NY 11967, USA

**SDS-PAGE**



 Tel: 1-631-559-9269 1-516-512-3133

 Email: [info@creative-biomart.com](mailto:info@creative-biomart.com)  Fax: 1-631-938-8127

 45-1 Ramsey Road, Shirley, NY 11967, USA