

# Recombinant Human src kinase associated phosphoprotein 1 protein, His tagged

Cat. No. SKAP1-01H Lot. No. (See product label)

## SPECIFICATION

<b>Product Overview</b>	Recombinant Human SKAP1 protein (1-358aa) with His tag was expressed in E. coli.
<b>Species</b>	Human
<b>Source</b>	E.coli
<b>ProteinLength</b>	1-358aa
<b>Description</b>	This gene encodes a T cell adaptor protein, a class of intracellular molecules with modular domains capable of recruiting additional proteins but that exhibit no intrinsic enzymatic activity. The encoded protein contains a unique N-terminal region followed by a PH domain and C-terminal SH3 domain. Along with the adhesion and degranulation-promoting adaptor protein, the encoded protein plays a critical role in inside-out signaling by coupling T-cell antigen receptor stimulation to the activation of integrins.
<b>Tag</b>	C-His
<b>Molecular Mass</b>	42 kDa
<b>AA Sequence</b>	MQAAALPEEIRWLLEDAEEFLAEGLRNENLSAVARDHRDHILRGFQQIKARYYWDF QPQGGDIGQDSSDDNHSGTLGLSLTSDAPFLSDYQDEGMEDIVKGAQELDNVIKQG YLEKKS KDHSFFGSEWQKRWCVVS RGLFY YYANEKSKQPKGTFLIKGYGVRMAPH LRRDSK KESCFELTSQDRRSYEFTATSPA EARDWVDQISFLLKDLSSLTIPYEEDEEE

 Tel: 1-631-559-9269 1-516-512-3133

 Email: [info@creative-biomart.com](mailto:info@creative-biomart.com)  Fax: 1-631-938-8127

 45-1 Ramsey Road, Shirley, NY 11967, USA

EEKEETYDDIDGFDSPSCGSQCRPTILPGSVGIKEPTEEKEEEDIYEVLPDEEHDLEE  
 DESGTRRKGVVDYASYQQLWDCHGDQPDELSFQRGDLIRILSKEYNMYGWWWVGE  
 LNSLVGIVPKEYLTTAFEVEERHHHHHHHH

**Endotoxin** < 1 EU/μg by LAL

**Purity** > 90% by SDS-PAGE

**Storage** Store it under sterile conditions at -20 to -80 centigrade. It is recommended that the protein be aliquoted for optimal storage. Avoid repeated freeze-thaw cycles.

**Storage Buffer** Sterile PBS, pH7.4

**Concentration** 1 mg/mL by BCA

## GENE INFORMATION

**Gene Name** SKAP1 src kinase associated phosphoprotein 1 [ Homo sapiens (human) ]

**Official Symbol** SKAP1

**Synonyms** SKAP1; src kinase associated phosphoprotein 1; SCAP1, src family associated phosphoprotein 1; src kinase-associated phosphoprotein 1; SKAP55; pp55; SKAP-55; src family associated phosphoprotein 1; src family-associated phosphoprotein 1; src kinase-associated phosphoprotein of 55 kDa; SCAP1

**Gene ID** 8631

**mRNA Refseq** NM\_001075099

**Protein Refseq** NP\_001068567

 Tel: 1-631-559-9269 1-516-512-3133

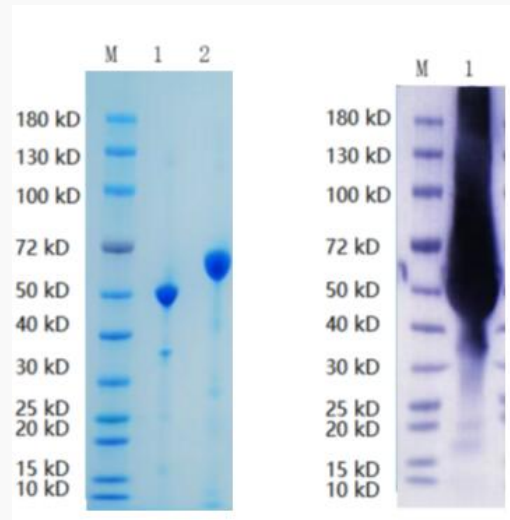
 Email: [info@creative-biomart.com](mailto:info@creative-biomart.com)  Fax: 1-631-938-8127

 45-1 Ramsey Road, Shirley, NY 11967, USA

**MIM** 604969

**UniProt ID** Q86WV1

Reducing 4%-20%  
SDS-PAGE (CBB  
stained) and WB  
(Anti-His Mouse  
Monoclonal  
antibody) analysis  
profiles of purified  
SKAP1.



1. SKAP1-01H
2. BSA

 Tel: 1-631-559-9269 1-516-512-3133

 Email: [info@creative-biomart.com](mailto:info@creative-biomart.com)  Fax: 1-631-938-8127

 45-1 Ramsey Road, Shirley, NY 11967, USA