

Recombinant Human SKAP1 Protein, Myc/DDK-tagged, C13 and N15-labeled

Cat. No. SKAP1-5471H Lot. No. (See product label)

SPECIFICATION

Product Overview

SKAP1 MS Standard C13 and N15-labeled recombinant protein (NP_001068567) with a C-terminal MYC/DDK tag, was expressed in HEK293 cells.

Species

Human

Source

HEK293

Description

This gene encodes a T cell adaptor protein, a class of intracellular molecules with modular domains capable of recruiting additional proteins but that exhibit no intrinsic enzymatic activity. The encoded protein contains a unique N-terminal region followed by a PH domain and C-terminal SH3 domain. Along with the adhesion and degranulation-promoting adaptor protein, the encoded protein plays a critical role in inside-out signaling by coupling T-cell antigen receptor stimulation to the activation of integrins.

Molecular Mass

41.3 kDa

AA Sequence

MQAAALPEEIRWLLEDAEEFLAEGLRNENLSAVARDHRDHILRGFQQIKARYYWDF
 QPQGGDIGQDSSDDNHSGTLGLSLTSDAPFLSDYQDEGMEDIVKGAQELDNVIKQG
 YLEKKS KDHSFFGSEWQKRWCVVSRLFYFYANESKQPKGTFLIKGYGVRMAPH
 LRRDSK KESCFELTSQDRRSYEFTATSPAARDWVDQISFLLKDLSSLTIPYEEDEEE
 EEKEETYDDIDGFDSPSCGSQCRPTILPGSVGIKEPTEEKEEEDIYEVLPDEEHDLEE
 DESGTRRKGDYASYQQGLWDCHGDQPDEL SFQRGDLIRILSKEYNMYGWWVGEL

 Tel: 1-631-559-9269 1-516-512-3133

 Email: info@creative-biomart.com  Fax: 1-631-938-8127

 45-1 Ramsey Road, Shirley, NY 11967, USA

NSLVGIVPKEYLTTAFEVEERTRTRPLEQKLISEEDLAANDILDYKDDDDKV

Purity > 80% as determined by SDS-PAGE and Coomassie blue staining

Stability Stable for 3 months from receipt of products under proper storage and handling conditions.

Storage Store at -80 centigrade. Avoid repeated freeze-thaw cycles.

Concentration 50 µg/mL as determined by BCA

Storage Buffer 100 mM glycine, 25 mM Tris-HCl, pH 7.3.

GENE INFORMATION

Gene Name SKAP1 src kinase associated phosphoprotein 1 [Homo sapiens (human)]

Official Symbol SKAP1

Synonyms SKAP1; src kinase associated phosphoprotein 1; SCAP1, src family associated phosphoprotein 1; src kinase-associated phosphoprotein 1; SKAP55; pp55; SKAP-55; src family associated phosphoprotein 1; src family-associated phosphoprotein 1; src kinase-associated phosphoprotein of 55 kDa; SCAP1;

Gene ID 8631

mRNA Refseq NM_001075099

Protein Refseq NP_001068567

MIM 604969

 Tel: 1-631-559-9269 1-516-512-3133

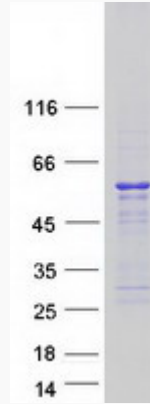
 Email: info@creative-biomart.com  Fax: 1-631-938-8127

 45-1 Ramsey Road, Shirley, NY 11967, USA

UniProt ID

Q86WV1

SDS-PAGE



 Tel: 1-631-559-9269 1-516-512-3133

 Email: info@creative-biomart.com  Fax: 1-631-938-8127

 45-1 Ramsey Road, Shirley, NY 11967, USA