

Recombinant Human SKAP2 Protein, Myc/DDK-tagged, C13 and N15-labeled

Cat. No. SKAP2-1397H Lot. No. (See product label)

SPECIFICATION

Product Overview

SKAP2 MS Standard C13 and N15-labeled recombinant protein (NP_003921) with a C-terminal MYC/DDK tag, was expressed in HEK293 cells.

Species

Human

Source

HEK293

Description

The protein encoded by this gene shares homology with Src kinase-associated phosphoprotein 1, and is a substrate of Src family kinases. It is an adaptor protein that is thought to play an essential role in the Src signaling pathway, and in regulating proper activation of the immune system. This protein contains an amino terminal coiled-coil domain for self-dimerization, a pleckstrin homology (PH) domain required for interactions with lipids at the membrane, and a Src homology (SH3) domain at the carboxy terminus. Some reports indicate that this protein inhibits actin polymerization through interactions with actin assembly factors, and might negatively regulate the invasiveness of tumors by modulating actin assembly. Alternative splicing results in multiple transcript variants encoding different isoforms.

Molecular Mass

41.2 kDa

AA Sequence

MPNPSSTSSPYPLPEEIRNLLADVETFVADILKGENLSKKAKEKRESLIKKIKDVKSIYL
QEFQDKGDAEDGEEYDDPFAGPPDTISLASERYDKDDEAPSDGAQFPPIAAQDLPF
VLKAGYLEKRRKDHSLGFEWQKRWCALSKTVFYYYGSDKDKQKQGEFAIDGYSV

 Tel: 1-631-559-9269 1-516-512-3133

 Email: info@creative-biomart.com  Fax: 1-631-938-8127

 45-1 Ramsey Road, Shirley, NY 11967, USA

RMNNTLRKDGKKDCCFEISAPDKRIYQFTAASPKDAEEWVQQLKFVLQDMESDIPE
 DYDERGELYDDVDHPLPISNPLTSSQPIDDEIYEELPEEEEDSAPVKVEEQRKMSQD
 SVHHTSGDKSTDYANFYQGLWDCTGAFSDELSFKRGDVIYILSKEYNRYGWWWGE
 MKGAIGLVPKAYIMEMYDITRTRPLEQKLISEEDLAANDILDYKDDDDKV

Purity > 80% as determined by SDS-PAGE and Coomassie blue staining

Stability Stable for 3 months from receipt of products under proper storage and handling conditions.

Storage Store at -80 centigrade. Avoid repeated freeze-thaw cycles.

Concentration 50 µg/mL as determined by BCA

Storage Buffer 100 mM glycine, 25 mM Tris-HCl, pH 7.3.

GENE INFORMATION

Gene Name SKAP2 src kinase associated phosphoprotein 2 [Homo sapiens (human)]

Official Symbol SKAP2

Synonyms SKAP2; src kinase associated phosphoprotein 2; SCAP2, src family associated phosphoprotein 2; src kinase-associated phosphoprotein 2; RA70; SAPS; SKAP HOM; SKAP55R; SKAP-55HOM; SKAP55 homolog; Pyk2/RAFTK-associated protein; src-associated adaptor protein; retinoic acid-induced protein 70; src family associated phosphoprotein 2; src family-associated phosphoprotein 2; Fyn-associated phosphoprotein SKAP55 homologue; src-associated adapter protein with PH and SH3 domains; src kinase-associated phosphoprotein 55-related protein; src kinase-associated phosphoprotein of 55-related protein; PRAP; SCAP2; SKAP-HOM; MGC10411; MGC33304;

 Tel: 1-631-559-9269 1-516-512-3133

 Email: info@creative-biomart.com  Fax: 1-631-938-8127

 45-1 Ramsey Road, Shirley, NY 11967, USA

Gene ID 8935

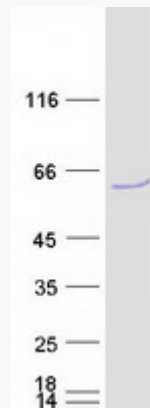
mRNA Refseq NM_003930

Protein Refseq NP_003921

MIM 605215

UniProt ID O75563

SDS-PAGE



 Tel: 1-631-559-9269 1-516-512-3133

 Email: info@creative-biomart.com  Fax: 1-631-938-8127

 45-1 Ramsey Road, Shirley, NY 11967, USA