

## Recombinant Human SKP1 Protein, His-tagged

Cat. No. SKP1-367H Lot. No. (See product label)

### SPECIFICATION

<b>Product Overview</b>	Recombinant Human SKP1(Met1~Lys163) fused with His tag at N-terminal was expressed in E. coli.
<b>Species</b>	Human
<b>Source</b>	E.coli
<b>ProteinLength</b>	Met1~Lys163
<b>Description</b>	<p>This gene encodes a component of SCF complexes, which are composed of this protein, cullin 1, a ring-box protein, and one member of the F-box family of proteins. This protein binds directly to the F-box motif found in F-box proteins. SCF complexes are involved in the regulated ubiquitination of specific protein substrates, which targets them for degradation by the proteasome. Specific F-box proteins recognize different target protein(s), and many specific SCF substrates have been identified including regulators of cell cycle progression and development. Studies have also characterized the protein as an RNA polymerase II elongation factor. Alternative splicing of this gene results in two transcript variants. A related pseudogene has been identified on chromosome 7.</p>
<b>Form</b>	PBS, pH7.4, containing 0.01% SKL, 1mM DTT, 5% Trehalose and Proclin300.
<b>Molecular Mass</b>	22.4kDa
<b>Endotoxin</b>	<1.0EU per 1g (determined by the LAL method)

 Tel: 1-631-559-9269 1-516-512-3133

 Email: [info@creative-biomart.com](mailto:info@creative-biomart.com)  Fax: 1-631-938-8127

 45-1 Ramsey Road, Shirley, NY 11967, USA

<b>Purity</b>	> 95%
<b>Applications</b>	Positive Control; Immunogen; SDS-PAGE; WB. If bio-activity of the protein is needed, please check active protein.
<b>Stability</b>	The thermal stability is described by the loss rate. The loss rate was determined by accelerated thermal degradation test, that is, incubate the protein at 37 centigrade for 48h, and no obvious degradation and precipitation were observed. The loss rate is less than 5% within the expiration date under appropriate storage condition.
<b>Storage</b>	Avoid repeated freeze/thaw cycles. Store at 2-8 centigrade for one month. Aliquot and store at -80 centigrade for 12 months.
<b>Reconstitution</b>	Reconstitute in PBS or others.

## GENE INFORMATION

<b>Gene Name</b>	SKP1 S-phase kinase-associated protein 1 [ Homo sapiens ]
<b>Official Symbol</b>	SKP1
<b>Synonyms</b>	SKP1; S-phase kinase-associated protein 1; S phase kinase associated protein 1A (p19A) , SKP1A; EMC19; MGC34403; OCP II; OCP2; p19A; TCEB1L; SIII; OCP-2; p19skp1; organ of Corti protein 2; organ of Corti protein II; cyclin A/CDK2-associated p19; transcription elongation factor B; cyclin A/CDK2-associated protein p19; cyclin-A/CDK2-associated protein p19; RNA polymerase II elongation factor-like protein OCP2; SKP1A; OCP-II;
<b>Gene ID</b>	6500
<b>mRNA Refseq</b>	NM_006930

 Tel: 1-631-559-9269 1-516-512-3133

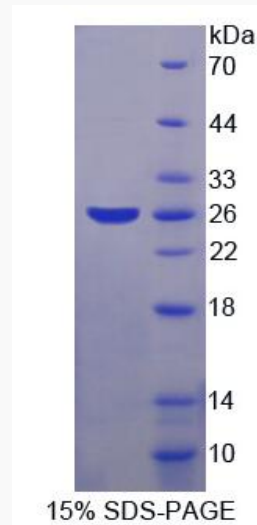
 Email: [info@creative-biomart.com](mailto:info@creative-biomart.com)  Fax: 1-631-938-8127

 45-1 Ramsey Road, Shirley, NY 11967, USA

**Protein Refseq** NP\_008861

**MIM** 601434

**UniProt ID** P63208



 Tel: 1-631-559-9269 1-516-512-3133

 Email: [info@creative-biomart.com](mailto:info@creative-biomart.com)  Fax: 1-631-938-8127

 45-1 Ramsey Road, Shirley, NY 11967, USA