

Recombinant Human SKP2 Protein, Myc/DDK-tagged, C13 and N15-labeled

Cat. No. SKP2-1144H **Lot. No.** (See product label)

SPECIFICATION

Product Overview

SKP2 MS Standard C13 and N15-labeled recombinant protein (NP_005974) with a C-terminal MYC/DDK tag, was expressed in HEK293 cells.

Species

Human

Source

HEK293

Description

This gene encodes a member of the F-box protein family which is characterized by an approximately 40 amino acid motif, the F-box. The F-box proteins constitute one of the four subunits of ubiquitin protein ligase complex called SCFs (SKP1-cullin-F-box), which function in phosphorylation-dependent ubiquitination. The F-box proteins are divided into 3 classes: Fbws containing WD-40 domains, Fbls containing leucine-rich repeats, and Fbxs containing either different protein-protein interaction modules or no recognizable motifs. The protein encoded by this gene belongs to the Fbls class; in addition to an F-box, this protein contains 10 tandem leucine-rich repeats. This protein is an essential element of the cyclin A-CDK2 S-phase kinase. It specifically recognizes phosphorylated cyclin-dependent kinase inhibitor 1B (CDKN1B, also referred to as p27 or KIP1) predominantly in S phase and interacts with S-phase kinase-associated protein 1 (SKP1 or p19). In addition, this gene is established as a protooncogene causally involved in the pathogenesis of lymphomas. Alternative splicing of this gene generates three transcript variants encoding different isoforms.

Molecular Mass

47.6 kDa

 Tel: 1-631-559-9269 1-516-512-3133

 Email: info@creative-biomart.com  Fax: 1-631-938-8127

 45-1 Ramsey Road, Shirley, NY 11967, USA

AA Sequence	MHRKHLQEIPDLSSNVATSFTWGWDSSTSELLSGMGVSALEKEEPDSENIPQELL SNLGHPESPFRKRLKSKGSDKDFVIVRRPKNLNRENFPGVSWDSLPEDELLLGIFSCLC LPELLKVSQVCKRWYRLASDESLWQTLDLTGKNLHPDVTGRLLSQGVIAFRCPRSF MDQPLAEHFSPFRVQHMDLSNSVIEVSTLHGILSQCSKLQNLSEGLRLSDPIVNTLA KNSNLVRLNLSGCSGFSEFALQTLSSCSRLELNLSWCFDFTEKHVQVAVAHVSE TITQLNLSGYRKNLQKSDLSTLVRRCPNLVHLDLSDSVMLKNDCFQEFFQLNYLQHL SLSRCYDIIPETLLELGEIPTLKTQVFGIVPDGTLQLLKEALPHLQINCSHFTTIARPTI GNKKNQEIWGIKRLTLQKPSCLTRTRPLEQKLISEEDLAANDILDYKDDDDKV
Purity	> 80% as determined by SDS-PAGE and Coomassie blue staining
Stability	Stable for 3 months from receipt of products under proper storage and handling conditions.
Storage	Store at -80 centigrade. Avoid repeated freeze-thaw cycles.
Concentration	50 µg/mL as determined by BCA
Storage Buffer	100 mM glycine, 25 mM Tris-HCl, pH 7.3.

GENE INFORMATION

Gene Name	SKP2 S-phase kinase associated protein 2 [Homo sapiens (human)]
Official Symbol	SKP2
Synonyms	SKP2; S-phase kinase-associated protein 2, E3 ubiquitin protein ligase; S phase kinase associated protein 2 (p45); S-phase kinase-associated protein 2; FBL1; FBXL1; p45; p45skp2; F-box/LRR-repeat protein 1; CDK2/cyclin A-associated protein p45; S-phase kinase-associated protein 2 (p45); FLB1; MGC1366;

 Tel: 1-631-559-9269 1-516-512-3133

 Email: info@creative-biomart.com  Fax: 1-631-938-8127

 45-1 Ramsey Road, Shirley, NY 11967, USA

Gene ID 6502

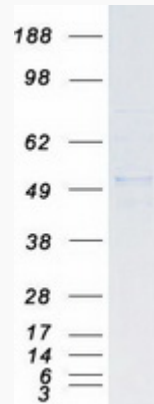
mRNA Refseq NM_005983

Protein Refseq NP_005974

MIM 601436

UniProt ID Q13309

SDS-PAGE



 Tel: 1-631-559-9269 1-516-512-3133

 Email: info@creative-biomart.com  Fax: 1-631-938-8127

 45-1 Ramsey Road, Shirley, NY 11967, USA