

Recombinant Human S-Phase Kinase-Associated Protein 2 (p45), GST-tagged

Cat. No. SKP2-1465H Lot. No. (See product label)

SPECIFICATION

Product Overview	SKP2 Human Recombinant produced in E.Coli is single, a non-glycosylated, Polypeptide chain containing 205 amino acids (221-425 a.a.) fused to a GST tag and having a total molecular mass of 49kDa. The SKP2 is purified by proprietary chromatographic techniques.
Species	Human
Source	Human
ProteinLength	221-425 a.a.
Description	<p>SKP2 enzyme is a substrate recognition component of the SCF E3 ubiquitin ligase complex which is involved in the ubiquitination and subsequent proteasomal degradation of target proteins which take part in cell cycle progression, signal transduction and transcription. SKP2 specifically recognizes phosphorylated CDKN1B/p27kip and is involved in regulation of G1/S transition. SKP2 gene is recognized as a protooncogene regularly involved in the pathogenesis of lymphomas. SKP2 is part of the F-box protein family which is known for its 40 amino acid motif, the F-box. F-box proteins comprise 1 of the 4 subunits of ubiquitin protein ligase complex called SCFs, which play a role in phosphorylation-dependent ubiquitination. There are 3 F-box classes: Fbws having WD-40 domains, Fbls having leucine-rich replicates, and Fbxs having either diverse protein-protein interaction or no recognizable motifs. SKP2 is part of the Fbls class.</p>

 Tel: 1-631-559-9269 1-516-512-3133

 Email: info@creative-biomart.com  Fax: 1-631-938-8127

 45-1 Ramsey Road, Shirley, NY 11967, USA

Form	SKP2 is supplied in 50mM Tris-Acetate, pH-7.5, 1mM EDTA and 20% Glycerol.
Physical Appearance	Sterile Filtered clear solution.
Storage	Store at 4°C if entire vial will be used within 2-4 weeks. Store, frozen at -20°C for longer periods of time. Please avoid freeze thaw cycles.
Pathways	APC/C-mediated degradation of cell cycle proteins; Adaptive Immunity Signaling; C-MYC pathway; Cell Cycle; Cyclin A:Cdk2-associated events at S phase entry; Delta-Notch Signaling Pathway; FOXM1 transcription factor network; FoxO family signaling; G1/S Transition; Immune System; Notch signaling pathway; Pathways in cancer; Regulation of mitotic cell cycle; p53 pathway; protein binding
GENE INFORMATION	
Gene Name	SKP2 S-phase kinase-associated protein 2 (p45) [Homo sapiens]
Official Symbol	SKP2
Synonyms	SKP2; S-phase kinase-associated protein 2 (p45); S-phase kinase-associated protein 2; p45skp2; F-box protein Skp2; OTTHUMP00000161733; OTTHUMP00000161734; OTTHUMP00000221389; F-box/LRR-repeat protein 1; CDK2/cyclin A-associated protein p45; cyclin A/CDK2-associated protein p45; cyclin-A/CDK2-associated protein p45
Gene ID	6502
mRNA Refseq	NM_005983
Protein Refseq	NP_005974

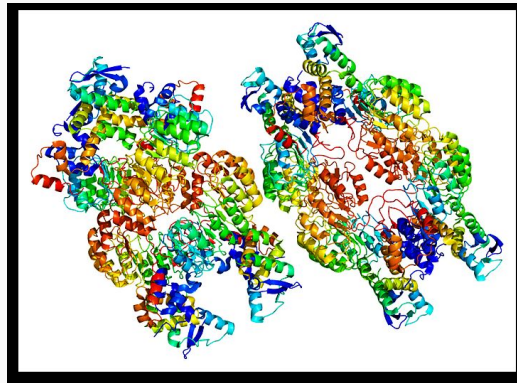
 Tel: 1-631-559-9269 1-516-512-3133

 Email: info@creative-biomart.com  Fax: 1-631-938-8127

 45-1 Ramsey Road, Shirley, NY 11967, USA

MIM	601436
UniProt ID	Q13309
Chromosome Location	5p13
Function	protein binding; ubiquitin-protein ligase activity

PDB rendering based
on 1fqv



 Tel: 1-631-559-9269 1-516-512-3133

 Email: info@creative-biomart.com  Fax: 1-631-938-8127

 45-1 Ramsey Road, Shirley, NY 11967, USA