

Recombinant Human SKP2 protein, His-tagged

Cat. No. SKP2-4367H Lot. No. (See product label)

SPECIFICATION

Product Overview	Recombinant Human SKP2 protein(Q13309)(1-424 aa), fused with C-terminal His tag, was expressed in E.coli.
Species	Human
Source	E.coli
Form	Lyophilized from a 0.2 µm sterile filtered PBS, 6% Trehalose, pH 7.4. The volume before lyophilization is 24µl/vial.
Molecular Mass	54.7 kDa
Endotoxin	<1.0 EU per 1µg of the protein by the LAL method.
Purity	≥85%, by SDS-PAGE quantitative densitometry by Coomassie Blue Staining.
Storage	Store at -20°C to -80°C.
Reconstitution	We recommend that this vial be briefly centrifuged prior to opening to bring the contents to the bottom. Please reconstitute protein in deionized sterile water to a concentration of 0.1-1.0 mg/mL. We recommend to add 5-50% of glycerol (final concentration) and aliquot for long-term storage at -20°C/-80°C.

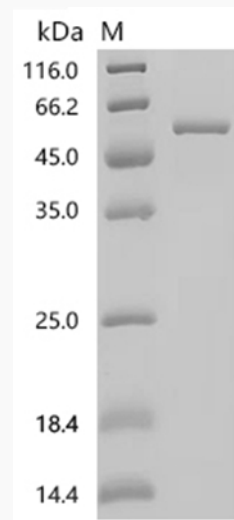
GENE INFORMATION

 Tel: 1-631-559-9269 1-516-512-3133

 Email: info@creative-biomart.com  Fax: 1-631-938-8127

 45-1 Ramsey Road, Shirley, NY 11967, USA

Gene Name	SKP2 S-phase kinase-associated protein 2 (p45) [Homo sapiens]
Official Symbol	SKP2
Synonyms	SKP2; S-phase kinase-associated protein 2 (p45); S-phase kinase-associated protein 2; FBL1; FBXL1
Gene ID	6502
mRNA Refseq	NM_001243120
Protein Refseq	NP_001230049
MIM	601436
UniProt ID	Q13309

SDS-PAGE


 Tel: 1-631-559-9269 1-516-512-3133

 Email: info@creative-biomart.com  Fax: 1-631-938-8127

 45-1 Ramsey Road, Shirley, NY 11967, USA