

Recombinant Human SKP2 protein, His-tagged

Cat. No. SKP2-5764H **Lot. No.** (See product label)

SPECIFICATION

Product Overview	Recombinant Human SKP2 protein(1-344 aa), fused with N-terminal His tag, was expressed in E.coli.
Species	Human
Source	E.coli
ProteinLength	1-344 aa
Form	The purified protein was lyophilized from sterile phosphate-buffered saline (PBS: 58 mM Na ₂ HPO ₄ , 17 mM NaH ₂ PO ₄ , 68 mM NaCl, pH 7.4). Prior to lyophilization, 5% (w/v) trehalose and 5% (w/v) mannitol were incorporated as cryoprotective excipients. The protein was eluted with a buffer containing 300 mM imidazole.
AASequence	MHRKHLQEIPDLSSNVATSFTWGWDSSTSELLSGMGVSALEKEEPDSENIPQELL SNLGHPESPPrKRLKSKGSDKDFVIVRRPKLNRENFPGVSWDSLPEDELLLGIFSCLC LPELLKVSQVCKRWYRLASDESLWQTLDLTGKNLHPDVTGRLLSQGVIAFRCPRSF MDQPLAEHFSPFRVQHMDLSNSVIEVSTLHGILSQCSKLQNLSEGLRSLSDPIVNTLA KNSNLVRLNLSGCSGFSEFALQTLSSCSRLELNLSWCFDFTEKHVQVAVAHVSE TITQLNLSGYRKNLQKSDLSTLVRRCPNLVHLDLSDSVMLKNDCFQEFFQLNYLQHL SLSR
Purity	90%, by SDS-PAGE with Coomassie Brilliant Blue staining.
Storage	Store at 2-8°C for 1-2 weeks. Aliquot and store at -20°C to -80°C for up to 3 months,

 Tel: 1-631-559-9269 1-516-512-3133

 Email: info@creative-biomart.com  Fax: 1-631-938-8127

 45-1 Ramsey Road, Shirley, NY 11967, USA

reconstitution with sterile water and addition of an equal volume of glycerol. Avoid repeat freeze-thaw cycles.

Reconstitution

Dissolve the product in 200 µl sterile water to achieve a working concentration of 0.25 g/µl. If experimental compatibility allows, mix the aqueous solution with an equal volume of glycerol (1:1 ratio) after initial reconstitution.

GENE INFORMATION

Gene Name	SKP2 S-phase kinase-associated protein 2, E3 ubiquitin protein ligase [Homo sapiens]
Official Symbol	SKP2
Synonyms	SKP2; S-phase kinase-associated protein 2, E3 ubiquitin protein ligase; S phase kinase associated protein 2 (p45); S-phase kinase-associated protein 2; FBL1; FBXL1; p45; p45skp2; F-box/LRR-repeat protein 1; CDK2/cyclin A-associated protein p45; S-phase kinase-associated protein 2 (p45); FLB1; MGC1366;
Gene ID	6502
mRNA Refseq	NM_001243120
Protein Refseq	NP_001230049
MIM	601436
UniProt ID	Q13309

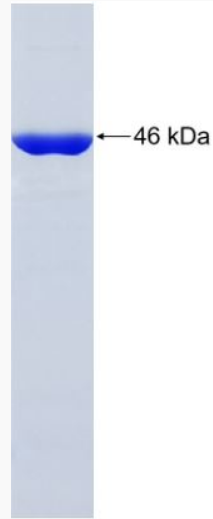
 Tel: 1-631-559-9269 1-516-512-3133

 Email: info@creative-biomart.com  Fax: 1-631-938-8127

 45-1 Ramsey Road, Shirley, NY 11967, USA



SDS-PAGE



Tel: 1-631-559-9269 1-516-512-3133

Email: info@creative-biomart.com Fax: 1-631-938-8127

45-1 Ramsey Road, Shirley, NY 11967, USA