

Recombinant Human SKP2 Protein (Lys43-Leu354), N-His tagged

Cat. No. SKP2-6295H Lot. No. (See product label)

SPECIFICATION

Product Overview	Recombinant human SKP2 (Lys43-Leu354) fused with the N-His tag was expressed in E. coli.
Species	Human
Source	E.coli
ProteinLength	Lys43-Leu354
Form	Lyophilized powder/frozen liquid
Molecular Mass	37.66 kDa
Purity	> 90 % as determined by SDS-PAGE
Notes	For research use only.
Storage	Use a manual defrost freezer and avoid repeated freeze thaw cycles. Store at 2 to 8 centigrade for one week. Store at -20 to -80 centigrade for twelve months from the date of receipt.
Storage Buffer	0.01M PBS, pH 7.4, 0.02 % NLS
Reconstitution	Reconstitute in sterile water for a stock solution.

 Tel: 1-631-559-9269 1-516-512-3133

 Email: info@creative-biomart.com  Fax: 1-631-938-8127

 45-1 Ramsey Road, Shirley, NY 11967, USA

Shipping They are shipped out with dry ice/blue ice unless customers require otherwise.

GENE INFORMATION

Gene Name SKP2 S-phase kinase-associated protein 2, E3 ubiquitin protein ligase [Homo sapiens (human)]

Official Symbol SKP2

Synonyms SKP2; S-phase kinase-associated protein 2, E3 ubiquitin protein ligase; S phase kinase associated protein 2 (p45); S-phase kinase-associated protein 2; FBL1; FBXL1; p45; p45skp2; F-box/LRR-repeat protein 1; CDK2/cyclin A-associated protein p45; S-phase kinase-associated protein 2 (p45); FLB1; MGC1366;

Gene ID 6502

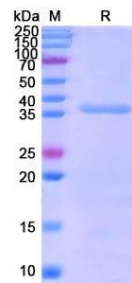
mRNA Refseq NM_001243120

Protein Refseq NP_001230049

MIM 601436

UniProt ID Q13309

SDS-PAGE



Tel: 1-631-559-9269 1-516-512-3133

Email: info@creative-biomart.com Fax: 1-631-938-8127

45-1 Ramsey Road, Shirley, NY 11967, USA