

Recombinant Human S-phase Kinase-associated Protein 2 (p45)

Cat. No. SKP2-684H Lot. No. (See product label)

SPECIFICATION

Product Overview	Recombinant Human skp2 (aa 221-425) is expressed in <i>E. coli</i> . MW=49kDa.
Species	Human
Source	<i>E. coli</i>
Protein Length	221-425 a.a.
Description	SKP2 is a substrate recognition component of the SCF (SKP1-CUL1-F-box protein) E3 ubiquitin ligase complex which mediates the ubiquitination and subsequent proteasomal degradation of target proteins involved in cell cycle progression, signal transduction and transcription. SKP2 specifically recognizes phosphorylated CDKN1B/p27kip and is involved in regulation of G1/S transition. This gene is established as a protooncogene causally involved in the pathogenesis of lymphomas (referenced from swissprot).
Application	ELISA, Inhibition Assays, Western Blotting.
Presentation	100µl purified human SKP2 protein at 100µg/ml in 50mM Tris-Acetate, pH7.5, 1mM EDTA, 20% Glycerol without BSA and Sodium Azide.
Characterization	On SDS-PAGE commassie blue stained gel, the purified recombinant protein shows a band at 49kDa (including GST).

 Tel: 1-631-559-9269 1-516-512-3133

 Email: info@creative-biomart.com  Fax: 1-631-938-8127

 45-1 Ramsey Road, Shirley, NY 11967, USA

Storage Store vial at -20⁰Cto -80⁰C. When stored at the recommended temperature, this protein is stable for 12 months.

GENE INFORMATION

Gene Name SKP2 S-phase kinase-associated protein 2 (p45) [Homo sapiens]

Synonyms SKP2; S-phase kinase-associated protein 2 (p45); CDK2/cyclin A-associated protein p45; F-box protein Skp2; F-box/LRR-repeat protein 1; S-phase kinase-associated protein 2; cyclin A/CDK2-associated protein p45; cyclin-A/CDK2-associated protein p45; p45skp2; FBL1; FLB1; FBXL1; MGC1366

Gene ID 6502

mRNA Refseq NM_005983

Protein Refseq NP_005974

MIM 601436

UniProt ID Q13309

Chromosome Location 5p13

Pathway Cell cycle; Pathways in cancer; Small cell lung cancer; Ubiquitin mediated proteolysis; Cell Cycle, Mitotic

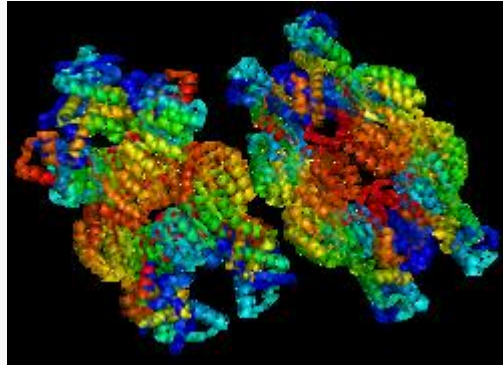
Function protein binding

 Tel: 1-631-559-9269 1-516-512-3133

 Email: info@creative-biomart.com  Fax: 1-631-938-8127

 45-1 Ramsey Road, Shirley, NY 11967, USA

PDB rendering based
on 1fqv.



 Tel: 1-631-559-9269 1-516-512-3133

 Email: info@creative-biomart.com  Fax: 1-631-938-8127

 45-1 Ramsey Road, Shirley, NY 11967, USA