

Recombinant Human SLAMF6 Protein, C-His-tagged

Cat. No. SLAMF6-016H Lot. No. (See product label)

SPECIFICATION

Product Overview	Recombinant Human SLAMF6 Protein with C-His tag was expressed in E. coli.
Species	Human
Source	E.coli
Description	<p>SLAMF6 (CD352/NTB-A) is a type-I transmembrane glycoprotein belonging to the signaling lymphocytic activation molecule (SLAM) family of immunomodulatory receptors. Like other members of the SLAM receptor family, SLAMF6 contains Ig-like domains within its extracellular region and conserved tyrosine-based signaling motifs within its intracellular domain that, when phosphorylated, bind to the SAP and EAT-2 signaling adaptors. SLAMF6 is expressed on the surface of multiple types of immune cells, such as those of the B, T, and NK lineages. Its activation is triggered by homotypic interactions involving its extracellular domain. Indeed, research studies have shown that in T-cells, SLAMF6 engagement facilitates activation and cytokine production. Similarly, homotypic ligand-mediated engagement of SLAMF6 on NK cells activates signaling cascades that drive proliferation, cytotoxicity, and cytokine production.</p>
Molecular Mass	~23 kDa
AA Sequence	<p>QSSLTPLMVNGILGESVTLPLEFPAGEKVNFIWLFNETSLAFIVPHETKSPEIHVTNP KQGKRLNFTQSYSLQLSNLKMEDTGSYRAQISTKTSAKLSSYTLRILRQLRNIQVTNH SQLFQNMTCELHLTCSVEDADDNV/SFRWEALGNTLSSQPNTVSWDPRISSEQDYT</p>

 Tel: 1-631-559-9269 1-516-512-3133

 Email: info@creative-biomart.com  Fax: 1-631-938-8127

 45-1 Ramsey Road, Shirley, NY 11967, USA

CIAENAVSNLSFSVSAQKLCEDVKIQYTDTKM

Purity

Transferred into competent cells and the supernatant was purified by NI column affinity chromatography and the purity is > 85% (by SDS-PAGE).

Notes

For research use only, not for use in diagnostic procedure.

Storage

Store at 4 centigrade short term. Aliquot and store at -20 centigrade long term. Avoid freeze-thaw cycles.

Concentration

≥0.5 mg/mL

Storage Buffer

PBS, 4M Urea, pH7.4

GENE INFORMATION

Gene Name

SLAMF6 SLAM family member 6 [Homo sapiens (human)]

Official Symbol

SLAMF6

Synonyms

SLAMF6; SLAM family member 6; CD352; KALI; KAL1b; Ly108; NTB A; NTBA; SF2000; NTBA receptor; NK-T-B-antigen; activating NK receptor; natural killer-, T- and B-cell antigen; NTB-A; FLJ50657; MGC104953;

Gene ID

114836

mRNA Refseq

NM_001184714

Protein Refseq

NP_001171643

MIM

606446

 Tel: 1-631-559-9269 1-516-512-3133

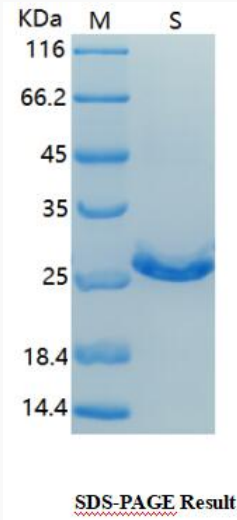
 Email: info@creative-biomart.com  Fax: 1-631-938-8127

 45-1 Ramsey Road, Shirley, NY 11967, USA

UniProt ID

Q96DU3

SDS-PAGE



 Tel: 1-631-559-9269 1-516-512-3133

 Email: info@creative-biomart.com  Fax: 1-631-938-8127

 45-1 Ramsey Road, Shirley, NY 11967, USA