

Recombinant Cynomolgus SLAMF6 protein, His-tagged

Cat. No. SLAMF6-1502C **Lot. No.** (See product label)

SPECIFICATION

Product Overview	Recombinant Cynomolgus SLAMF6 protein(G7NWD4)(Val20-Lys225), fused with C-terminal His tag, was expressed in HEK293.
Species	Cynomolgus
Source	C-His
ProteinLength	Val20-Lys225
Tag	C-His
Form	Lyophilized from 0.22µm filtered solution in PBS (pH 7.4). Normally 8% trehalose is added as protectant before lyophilization.
Bio-activity	
Molecular Mass	The protein has a predicted MW of 23.98 kDa. Due to glycosylation, the protein migrates to 37-50 kDa based on Tris-Bis PAGE result.
Endotoxin	Less than 1EU per µg by the LAL method.
Purity	> 95% as determined by Tris-Bis PAGE; > 95% as determined by HPLC.
Storage	Reconstituted protein stable at -80°C for 12 months, 4°C for 1 week. Use a manual defrost freezer and avoid repeated freeze-thaw cycles.

 Tel: 1-631-559-9269 1-516-512-3133

 Email: info@creative-biomart.com  Fax: 1-631-938-8127

 45-1 Ramsey Road, Shirley, NY 11967, USA

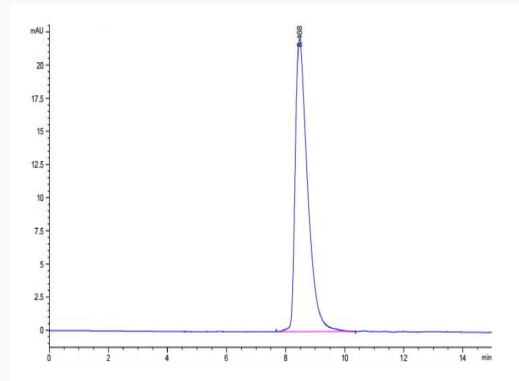
Reconstitution

Centrifuge tubes before opening. Reconstituting to a concentration more than 100 $\mu\text{g/ml}$ is recommended. Dissolve the lyophilized protein in distilled water.

Tris-Bis PAGE



SEC-HPLC



 Tel: 1-631-559-9269 1-516-512-3133

 Email: info@creative-biomart.com  Fax: 1-631-938-8127

 45-1 Ramsey Road, Shirley, NY 11967, USA