

Recombinant Human SLAMF6 Protein (Leu28-Lys225), C-His tagged

Cat. No. SLAMF6-5600H Lot. No. (See product label)

SPECIFICATION

Product Overview	Recombinant human SLAMF6 (Leu28-Lys225) fused with the C-terminal His tag was expressed in mammalian cells.
Species	Human
Source	Mammalian Cells
ProteinLength	Leu28-Lys225
Form	Lyophilized powder/frozen liquid
Molecular Mass	21.78 kDa
Purity	> 90 % as determined by SDS-PAGE
Notes	For research use only.
Storage	Use a manual defrost freezer and avoid repeated freeze thaw cycles. Store at 2 to 8 centigrade for one week. Store at -20 to -80 centigrade for twelve months from the date of receipt.
Storage Buffer	Supplied as solution form in PBS or lyophilized from PBS.
Reconstitution	Reconstitute in sterile water for a stock solution.

 Tel: 1-631-559-9269 1-516-512-3133

 Email: info@creative-biomart.com  Fax: 1-631-938-8127

 45-1 Ramsey Road, Shirley, NY 11967, USA

Shipping They are shipped out with dry ice/blue ice unless customers require otherwise.

GENE INFORMATION

Gene Name SLAMF6 SLAM family member 6 [Homo sapiens (human)]

Official Symbol SLAMF6

Synonyms SLAMF6; SLAM family member 6; CD352; KALI; KAL1b; Ly108; NTB A; NTBA; SF2000; NTBA receptor; NK-T-B-antigen; activating NK receptor; natural killer-, T- and B-cell antigen; NTB-A; FLJ50657; MGC104953;

Gene ID 114836

mRNA Refseq NM_001184714

Protein Refseq NP_001171643

MIM 606446

UniProt ID Q96DU3

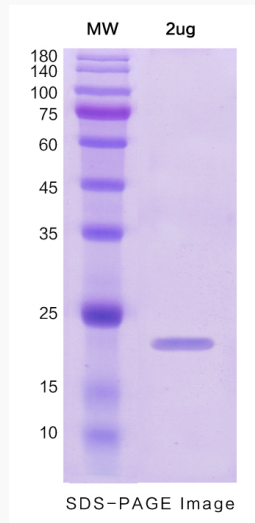
 Tel: 1-631-559-9269 1-516-512-3133

 Email: info@creative-biomart.com  Fax: 1-631-938-8127

 45-1 Ramsey Road, Shirley, NY 11967, USA



SDS-PAGE



Tel: 1-631-559-9269 1-516-512-3133

Email: info@creative-biomart.com Fax: 1-631-938-8127

45-1 Ramsey Road, Shirley, NY 11967, USA