

Recombinant Human SLAMF6 protein, His-Avi-tagged

Cat. No. SLAMF6-5643H **Lot. No.** (See product label)

SPECIFICATION

Product Overview	Recombinant Human SLAMF6 protein(Q96DU3-1)(Gln22-Met226), fused with C-terminal His and Avi tag, was expressed in HEK293.
Species	Human
Source	HEK293
ProteinLength	Gln22-Met226
Tag	C-His-Avi
Form	Supplied as 0.22µm filtered solution in PBS (pH 7.4).
Bio-activity	Immobilized Human SLAMF6, His Tag at 0.5ug/ml (100ul/well) on the plate. Dose response curve for Anti-SLAMF6 Antibody, hFc Tag with the EC50 of 2.8ng/ml determined by ELISA.
Molecular Mass	The protein has a predicted MW of 26 kDa. Due to glycosylation, the protein migrates to 35-50 kDa based on Tris-Bis PAGE result.
Endotoxin	Less than 1EU per µg by the LAL method.
Purity	> 95% as determined by Tris-Bis PAGE;> 95% as determined by HPLC
Storage	Valid for 12 months from date of receipt when stored at -80°C. Recommend to aliquot

 Tel: 1-631-559-9269 1-516-512-3133

 Email: info@creative-biomart.com  Fax: 1-631-938-8127

 45-1 Ramsey Road, Shirley, NY 11967, USA

the protein into smaller quantities for optimal storage. Please do not repeated freeze-thaw cycles.

Reconstitution

It is recommended that sterile water be added to the vial to prepare a stock solution of 0.2 ug/ul. Centrifuge the vial at 4°C before opening to recover the entire contents.

GENE INFORMATION

Gene Name [SLAMF6 SLAM family member 6 \[Homo sapiens \]](#)

Official Symbol [SLAMF6](#)

Synonyms

SLAMF6; SLAM family member 6; CD352; KALI; KAL1b; Ly108; NTB A; NTBA; SF2000; NTBA receptor; NK-T-B-antigen; activating NK receptor; natural killer-, T- and B-cell antigen; NTB-A; FLJ50657; MGC104953;

Gene ID [114836](#)

mRNA Refseq [NM_001184714](#)

Protein Refseq [NP_001171643](#)

MIM [606446](#)

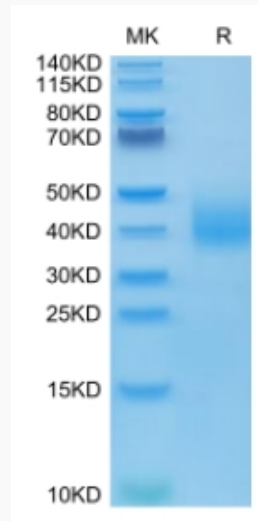
UniProt ID [Q96DU3](#)

 Tel: 1-631-559-9269 1-516-512-3133

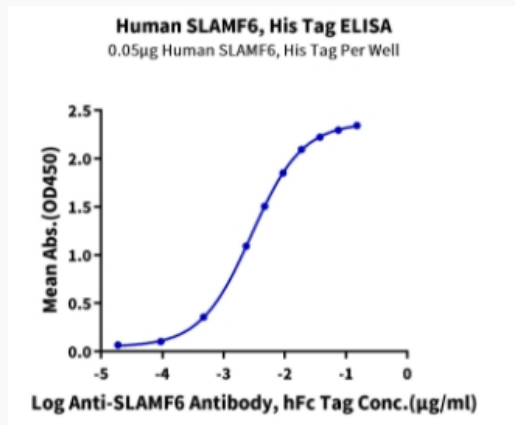
 Email: info@creative-biomart.com  Fax: 1-631-938-8127

 45-1 Ramsey Road, Shirley, NY 11967, USA

Tris-Bis PAGE



ELISA Data



 Tel: 1-631-559-9269 1-516-512-3133

 Email: info@creative-biomart.com  Fax: 1-631-938-8127

 45-1 Ramsey Road, Shirley, NY 11967, USA