

Recombinant Human SLAMF6 Protein (Gln22-Met226), C-mFc and 6xHis-tagged

Cat. No. SLAMF6-671H Lot. No. (See product label)

SPECIFICATION

Product Overview

Recombinant Human SLAMF6 Protein (Gln22-Met226) with C-mFc and 6xHis tag was expressed in HEK293.

Species

Human

Source

HEK293

ProteinLength

Gln22-Met226

Description

The protein encoded by this gene is a type I transmembrane protein, belonging to the CD2 subfamily of the immunoglobulin superfamily. This encoded protein is expressed on Natural killer (NK), T, and B lymphocytes. It undergoes tyrosine phosphorylation and associates with the Src homology 2 domain-containing protein (SH2D1A) as well as with SH2 domain-containing phosphatases (SHPs). It functions as a coreceptor in the process of NK cell activation. It can also mediate inhibitory signals in NK cells from X-linked lymphoproliferative patients. Alternative splicing results in multiple transcript variants encoding distinct isoforms.

Form

Lyophilized

Molecular Mass

50.1 kDa

Purity

> 95% as determined by SDS-PAGE and Coomassie blue staining.

 Tel: 1-631-559-9269 1-516-512-3133

 Email: info@creative-biomart.com  Fax: 1-631-938-8127

 45-1 Ramsey Road, Shirley, NY 11967, USA

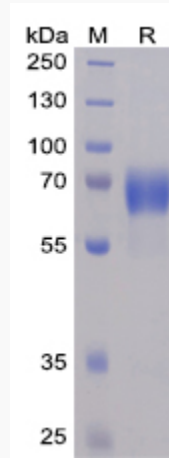
Storage	Store at -80 centigrade for 12 months (Avoid repeated freezing and thawing)
Storage Buffer	Lyophilized from sterile PBS, pH 7.4. Normally 5 % - 50 % trehalose is added as protectants before lyophilization.
GENE INFORMATION	
Gene Name	SLAMF6 SLAM family member 6 [Homo sapiens (human)]
Official Symbol	SLAMF6
Synonyms	SLAMF6; SLAM family member 6; CD352; KALI; KAL1b; Ly108; NTB A; NTBA; SF200; NTBA receptor; NK-T-B-antigen; activating NK receptor; natural killer-, T- and B-cell antigen; NTB-A; FLJ50657; MGC104953;
Gene ID	114836
mRNA Refseq	NM_001184714
Protein Refseq	NP_001171643
MIM	606446
UniProt ID	Q96DU3

 Tel: 1-631-559-9269 1-516-512-3133

 Email: info@creative-biomart.com  Fax: 1-631-938-8127

 45-1 Ramsey Road, Shirley, NY 11967, USA

SDS-PAGE



 Tel: 1-631-559-9269 1-516-512-3133

 Email: info@creative-biomart.com  Fax: 1-631-938-8127

 45-1 Ramsey Road, Shirley, NY 11967, USA