

Recombinant Human SLAMF6 protein, hFc-Flag-tagged

Cat. No. SLAMF6-7354H **Lot. No.** (See product label)

SPECIFICATION

Product Overview	Recombinant Human SLAMF6 protein(Q96DU3)(22-226aa), fused with C-terminal hFc and Flag tag, was expressed in HEK293.
Species	Human
Source	HEK293
ProteinLength	22-226aa
Tag	C-hFc-Flag
Form	If the delivery form is liquid, the default storage buffer is Tris/PBS-based buffer, 5%-50% glycerol. If the delivery form is lyophilized powder, the buffer before lyophilization is Tris/PBS-based buffer, 6% Trehalose, pH 8.0.
Molecular Mass	51.8 kDa
Purity	Greater than 90% as determined by SDS-PAGE. Greater than 90% as determined by SEC-HPLC.
Storage	Store at -20°C/-80°C upon receipt, aliquoting is necessary for mutiple use. Avoid repeated freeze-thaw cycles.
Reconstitution	We recommend that this vial be briefly centrifuged prior to opening to bring the contents to the bottom. Please reconstitute protein in deionized sterile water to a

 Tel: 1-631-559-9269 1-516-512-3133

 Email: info@creative-biomart.com  Fax: 1-631-938-8127

 45-1 Ramsey Road, Shirley, NY 11967, USA

concentration of 0.1-1.0 mg/mL. We recommend to add 5-50% of glycerol (final concentration) and aliquot for long-term storage at -20°C/-80°C.

AA Sequence

QSSLTPLMVNGILGESVTLPLEFPAGEKVNFFITWLFNETSLAFIVPHETKSPEIHVTNP
KQGKRLNFTQSYSLQLSNLKMEDTGSYRAQISTKTSAKLSSYTLRILRQLRNIQVTNH
SQLFQNMTCELHLTCSVEDADDNVSFRWEALGNTLSSQPNLTVSWDPRISSEQDYT
CIAENAVSNLSFSVSAQKLCEDVKIQYTDTKM

GENE INFORMATION

Gene Name

SLAMF6 SLAM family member 6 [Homo sapiens]

Official Symbol

SLAMF6

Synonyms

SLAMF6; SLAM family member 6; CD352; KALI; KAL1b; Ly108; NTB A; NTBA;
SF2000; NTBA receptor; NK-T-B-antigen; activating NK receptor; natural killer-, T-
and B-cell antigen; NTB-A; FLJ50657; MGC104953;

Gene ID

114836

mRNA Refseq

NM_001184714

Protein Refseq

NP_001171643

MIM

606446

UniProt ID

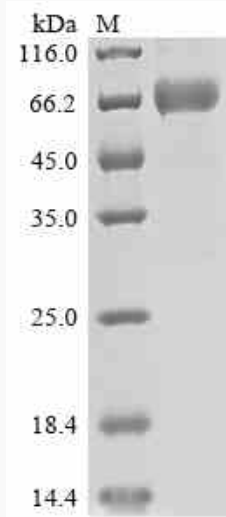
Q96DU3

 Tel: 1-631-559-9269 1-516-512-3133

 Email: info@creative-biomart.com  Fax: 1-631-938-8127

 45-1 Ramsey Road, Shirley, NY 11967, USA

SDS-PAGE



 Tel: 1-631-559-9269 1-516-512-3133

 Email: info@creative-biomart.com  Fax: 1-631-938-8127

 45-1 Ramsey Road, Shirley, NY 11967, USA