

## Active Recombinant Human SLAMF7 protein, His-tagged

Cat. No. SLAMF7-1281H Lot. No. (See product label)

### SPECIFICATION

<b>Product Overview</b>	Recombinant Human SLAMF7/CD319 Protein is produced by HEK293 expression system. The target protein is expressed with sequence (Ser23-Met226) of human SLAMF7/CD319 (Accession #NP_067004.3) fused with a 6xHis tag at the C-terminus.
<b>Species</b>	Human
<b>Source</b>	HEK293
<b>ProteinLength</b>	Ser23-Met226
<b>Form</b>	Lyophilized from a 0.22 µm filtered solution of PBS, pH 7.4.
<b>Bio-activity</b>	Measured by its binding ability in a functional ELISA. Immobilized Recombinant Human SLAMF7 at 2 µg/mL (100 µL/well) can bind Anti-SLAMF7 antibody with a linear range of 40-120 ng/mL.
<b>Molecular Mass</b>	35-40 kDa
<b>Endotoxin</b>	< 1.0 EU/µg of the protein by LAL method.
<b>Purity</b>	> 92% by SDS-PAGE.
<b>Storage</b>	Store the lyophilized protein at -20°C to -80 °C for long term. After reconstitution, the protein solution is stable at -20 °C for 3 months, at 2-8 °C for

 Tel: 1-631-559-9269 1-516-512-3133

 Email: [info@creative-biomart.com](mailto:info@creative-biomart.com)  Fax: 1-631-938-8127

 45-1 Ramsey Road, Shirley, NY 11967, USA

up to 1 week.

**Reconstitution** Reconstitute to a concentration of 0.1-0.5 mg/mL in sterile distilled water.

## GENE INFORMATION

**Gene Name** [SLAMF7 SLAM family member 7 \[ Homo sapiens \]](#)

**Official Symbol** [SLAMF7](#)

**Synonyms** SLAMF7; SLAM family member 7; 19A; CD319; CRACC; CS1; protein 19A; CD2 subset 1; 19A24 protein; membrane protein FOAP-12; CD2-like receptor activating cytotoxic cells; CD2-like receptor-activating cytotoxic cells; novel LY9 (lymphocyte antigen 9) like protein;

**Gene ID** [57823](#)

**mRNA Refseq** [NM\\_021181](#)

**Protein Refseq** [NP\\_067004](#)

**MIM** [606625](#)

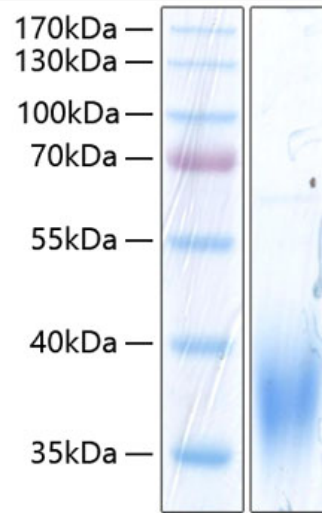
**UniProt ID** [Q9NQ25](#)

 Tel: 1-631-559-9269 1-516-512-3133

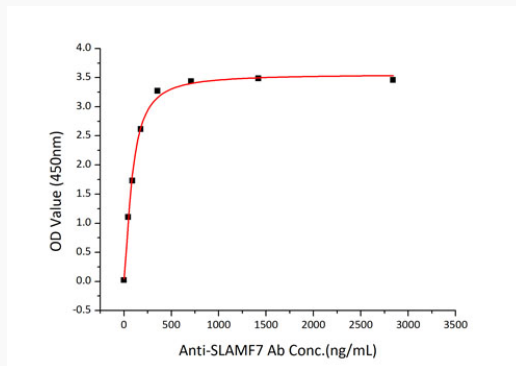
 Email: [info@creative-biomart.com](mailto:info@creative-biomart.com)  Fax: 1-631-938-8127

 45-1 Ramsey Road, Shirley, NY 11967, USA

**SDS-PAGE**



**Activity**



 Tel: 1-631-559-9269 1-516-512-3133

 Email: [info@creative-biomart.com](mailto:info@creative-biomart.com)  Fax: 1-631-938-8127

 45-1 Ramsey Road, Shirley, NY 11967, USA