

Recombinant Full Length Human SLAMF7 Protein, C-Flag-tagged


Cat. No. SLAMF7-1326HFL **Lot. No.** (See product label)

SPECIFICATION

Product Overview	Recombinant Full Length Human SLAMF7 Protein, fused to Flag-tag at C-terminus, was expressed in Mammalian cells.
Species	Human
Source	Mammalian Cells
Description	Enables identical protein binding activity. Predicted to be involved in adaptive immune response. Predicted to act upstream of or within regulation of natural killer cell activation. Located in endoplasmic reticulum.
Form	25 mM Tris HCl, pH 7.3, 100 mM glycine, 10% glycerol.
Molecular Mass	37.2 kDa
AA Sequence	MAGSPTCLTIYILWQLTGSAASGPVKELVGSVGGAVTFPLKSKVKQVDSIVWTFNT TPLVTIQPEGGTI IVTQNRNRERVDFFPDGGYSLKLSKLNKNDSGIYYVGIYSSSLQQP STQEYVLHVYEHLSKPKVTMGLQSN KNGTCVTNLCCMEHGEEDVIYTWKALGQA ANESHNGSILPISWRWGESDMTFICVARNPVSRNFSSPIL ARKLCEGAADDPDSSM VLLCLLLVPLLLSLFVLGLFLWFLKRERQEEYIEEKRVKRDICRETPNICPHSGE NTEYDTIPHTNRTILKEDPANTVYSTVEIPKKMENPHSLLTMPDTPRLFAYENVITRTR PLEQKLISEEDLAANDILDYKDDDDKV
Purity	> 80% as determined by SDS-PAGE and Coomassie blue staining.

 Tel: 1-631-559-9269 1-516-512-3133

 Email: info@creative-biomart.com  Fax: 1-631-938-8127

 45-1 Ramsey Road, Shirley, NY 11967, USA

Stability	Stable for 12 months from the date of receipt of the product under proper storage and handling conditions. Avoid repeated freeze-thaw cycles.
Storage	Store at -80 centigrade.
Concentration	>50 ug/mL as determined by microplate BCA method.
Preparation	Recombinant protein was captured through anti-DDK affinity column followed by conventional chromatography steps.
Protein Families	Druggable Genome, Transmembrane
Full Length	Full L.

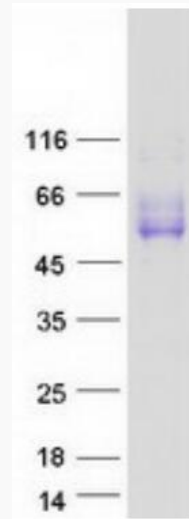
GENE INFORMATION

Gene Name	SLAMF7 SLAM family member 7 [Homo sapiens (human)]
Official Symbol	SLAMF7
Synonyms	19A; CS1; CD319; CRACC
Gene ID	57823
mRNA Refseq	NM_021181.5
Protein Refseq	NP_067004.3
MIM	606625
UniProt ID	Q9NQ25

 Tel: 1-631-559-9269 1-516-512-3133

 Email: info@creative-biomart.com  Fax: 1-631-938-8127

 45-1 Ramsey Road, Shirley, NY 11967, USA



Coomassie blue staining of purified SLAMF7 protein.

 Tel: 1-631-559-9269 1-516-512-3133

 Email: info@creative-biomart.com  Fax: 1-631-938-8127

 45-1 Ramsey Road, Shirley, NY 11967, USA