

## Recombinant Mouse SLAMF7 Protein (23-224 aa), His-tagged

Cat. No. SLAMF7-2323M Lot. No. (See product label)

### SPECIFICATION

<b>Product Overview</b>	Recombinant Mouse SLAMF7 Protein (23-224 aa) is produced by E. coli expression system. This protein is fused with a 6xHis tag at the N-terminal. Research Area: Immunology. Protein Description: Partial.
<b>Species</b>	Mouse
<b>Source</b>	E.coli
<b>ProteinLength</b>	23-224 aa
<b>Description</b>	Self-ligand receptor of the signaling lymphocytic activation molecule (SLAM) family. SLAM receptors triggered by homo- or heterotypic cell-cell interactions are modulating the activation and differentiation of a wide variety of immune cells and thus are involved in the regulation and interconnection of both innate and adaptive immune response. Activities are controlled by presence or absence of small cytoplasmic adapter proteins, SH2D1A/SAP and/or SH2D1B/EAT-2. Mediates natural killer (NK) cell activation through a SH2D1A-independent extracellular signal-regulated ERK-mediated pathway. Positively regulates NK cell functions by a mechanism dependent on the adapter SH2D1B. In addition to heterotypic NK cells-target cells interactions also homotypic interactions between NK cells may contribute to activation. However, in the absence of SH2D1B, inhibits NK cell function. Acts also inhibitory in T-cells. May play a role in lymphocyte adhesion. In LPS-activated monocytes negatively regulates production of proinflammatory cytokines.

 Tel: 1-631-559-9269 1-516-512-3133

 Email: [info@creative-biomart.com](mailto:info@creative-biomart.com)  Fax: 1-631-938-8127

 45-1 Ramsey Road, Shirley, NY 11967, USA

<b>Form</b>	Tris-based buffer,50% glycerol
<b>Molecular Mass</b>	27.8 kDa
<b>AA Sequence</b>	SGTLKKVAGALDGSVTFTLNITEIKVDYVVWTFNTFFLAMVKKDGVTSQSSNKERIVF PDGLYSMKLSQLKKNDGAYRAEIYSTSSQASLIQEYVLHVYKHLSPKVTIDRQSN KNGTCVINLTCSTDQDGENVTYSWKAVGGQDNQFHDGATLSIAWRSGEKDQALTC MARNPVSNSFSTPVFPQKLCEDAATDLTSLRG
<b>Purity</b>	> 85% as determined by SDS-PAGE.
<b>Notes</b>	Repeated freezing and thawing is not recommended. Store working aliquots at 4 centigrade for up to one week.
<b>Storage</b>	The shelf life is related to many factors, storage state, buffer ingredients, storage temperature and the stability of the protein itself. Generally, the shelf life of liquid form is 6 months at -20 centigrade/-80 centigrade. The shelf life of lyophilized form is 12 months at -20 centigrade/-80 centigrade.
<b>Concentration</b>	A hardcopy of COA will be sent along with the products. Please refer to it for detailed information.

## GENE INFORMATION

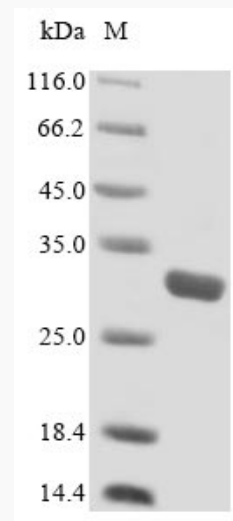
<b>Gene Name</b>	<a href="#">Slamf7 SLAM family member 7 [ Mus musculus ]</a>
<b>Official Symbol</b>	<a href="#">SLAMF7</a>
<b>Synonyms</b>	SLAMF7; SLAM family member 7; novel Ly9; leukocyte cell-surface antigen; 19A; CS1; 19A24; CRACC; 4930560D03Rik;

 Tel: 1-631-559-9269 1-516-512-3133

 Email: [info@creative-biomart.com](mailto:info@creative-biomart.com)  Fax: 1-631-938-8127

 45-1 Ramsey Road, Shirley, NY 11967, USA

Gene ID	75345
mRNA Refseq	NM_144539
Protein Refseq	NP_653122
UniProt ID	Q8BHK6



(Tris-Glycine gel) Discontinuous SDS-PAGE (reduced) with 5% enrichment gel and 15% separation gel.

Tel: 1-631-559-9269 1-516-512-3133

Email: [info@creative-biomart.com](mailto:info@creative-biomart.com) Fax: 1-631-938-8127

45-1 Ramsey Road, Shirley, NY 11967, USA