

Recombinant Human SLAMF7 Protein, Myc/DDK-tagged, C13 and N15-labeled

Cat. No. SLAMF7-2499H **Lot. No.** (See product label)

SPECIFICATION

Product Overview	SLAMF7 MS Standard C13 and N15-labeled recombinant protein (NP_067004) with a C-terminal MYC/DDK tag, was expressed in HEK293 cells.
Species	Human
Source	HEK293
Description	Isoform 3 does not mediate any NK cell activation.
Molecular Mass	37.2 kDa
AA Sequence	MAGSPTCLTLIYLWQLTGSAASGPVKELVGSVGGAVTFPLKSKVKQVDSIVWTFNT TPLVTIQPEGGTIIVTQNRNRERVDFPDGGYSLKLSKLNKNDSGIYYVGIYSSSLQQP STQEYVLHVYEHLSKPKVTMGLQSNKNGTCVTNLTCCMEHGEEDVIYTWKALGQAA NESHNGSILPISWRWGESDMTFICVARNPVSARNFSSPILARKLCEGAADDPDSSMVL LCLLLVPLLLSLFVLGLFLWFLKRERQEEYIEEKKRVDICRETPNICPHSGENTEYDTI PHTNRTILKEDPANTVYSTVEIPKKMENPHSLLTMPDTPRLFAYENVITRTRPLEQKLI SEEDLAANDILDYKDDDDKV
Purity	> 80% as determined by SDS-PAGE and Coomassie blue staining
Stability	Stable for 3 months from receipt of products under proper storage and handling conditions.

 Tel: 1-631-559-9269 1-516-512-3133

 Email: info@creative-biomart.com  Fax: 1-631-938-8127

 45-1 Ramsey Road, Shirley, NY 11967, USA

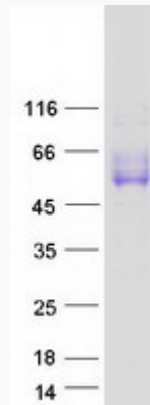
Storage	Store at -80 centigrade. Avoid repeated freeze-thaw cycles.
Concentration	50 µg/mL as determined by BCA
Storage Buffer	100 mM glycine, 25 mM Tris-HCl, pH 7.3.
GENE INFORMATION	
Gene Name	SLAMF7 SLAM family member 7 [Homo sapiens (human)]
Official Symbol	SLAMF7
Synonyms	SLAMF7; SLAM family member 7; 19A; CD319; CRACC; CS1; protein 19A; CD2 subset 1; 19A24 protein; membrane protein FOAP-12; CD2-like receptor activating cytotoxic cells; CD2-like receptor-activating cytotoxic cells; novel LY9 (lymphocyte antigen 9) like protein;
Gene ID	57823
mRNA Refseq	NM_021181
Protein Refseq	NP_067004
MIM	606625
UniProt ID	Q9NQ25

 Tel: 1-631-559-9269 1-516-512-3133

 Email: info@creative-biomart.com  Fax: 1-631-938-8127

 45-1 Ramsey Road, Shirley, NY 11967, USA

SDS-PAGE



 Tel: 1-631-559-9269 1-516-512-3133

 Email: info@creative-biomart.com  Fax: 1-631-938-8127

 45-1 Ramsey Road, Shirley, NY 11967, USA