

Active Recombinant Human SLAMF7 protein, hFc&His-tagged

Cat. No. SLAMF7-2688H Lot. No. (See product label)

SPECIFICATION

Product Overview	Recombinant Human SLAMF7/CD319 Protein is produced by HEK293 cells expression system. The target protein is expressed with sequence (Ser23-Met226) of human SLAMF7/CRACC/CD319 (Accession #NP_067004.3) fused with an Fc, 6xHis tag at the C-terminus.
Species	Human
Source	HEK293
ProteinLength	Ser23-Met226
Form	Lyophilized from a 0.22 µm filtered solution of PBS, pH 7.4.
Bio-activity	Measured by its binding ability in a functional ELISA. Immobilized Recombinant Human SLAMF7 at 2 µg/mL (100 µL/well) can bind Anti-SLAMF7 antibody with a linear range of 60-150 ng/mL.
Molecular Mass	60-70 kDa
Endotoxin	< 0.1 EU/µg of the protein by LAL method.
Purity	> 95% by SDS-PAGE.
Storage	Store the lyophilized protein at -20°C to -80 °C for long term. After reconstitution, the protein solution is stable at -20 °C for 3 months, at 2-8 °C for

 Tel: 1-631-559-9269 1-516-512-3133

 Email: info@creative-biomart.com  Fax: 1-631-938-8127

 45-1 Ramsey Road, Shirley, NY 11967, USA

up to 1 week.

Reconstitution Reconstitute to a concentration of 0.1-0.5 mg/mL in sterile distilled water.

GENE INFORMATION

Gene Name [SLAMF7 SLAM family member 7 \[Homo sapiens \]](#)

Official Symbol [SLAMF7](#)

Synonyms SLAMF7; SLAM family member 7; 19A; CD319; CRACC; CS1; protein 19A; CD2 subset 1; 19A24 protein; membrane protein FOAP-12; CD2-like receptor activating cytotoxic cells; CD2-like receptor-activating cytotoxic cells; novel LY9 (lymphocyte antigen 9) like protein;

Gene ID [57823](#)

mRNA Refseq [NM_021181](#)

Protein Refseq [NP_067004](#)

MIM [606625](#)

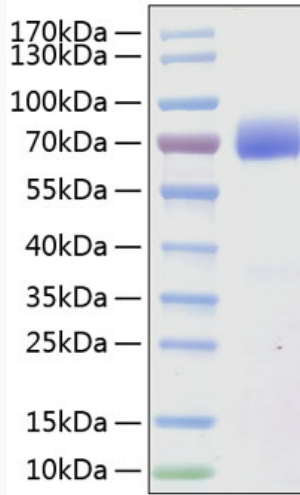
UniProt ID [Q9NQ25](#)

 Tel: 1-631-559-9269 1-516-512-3133

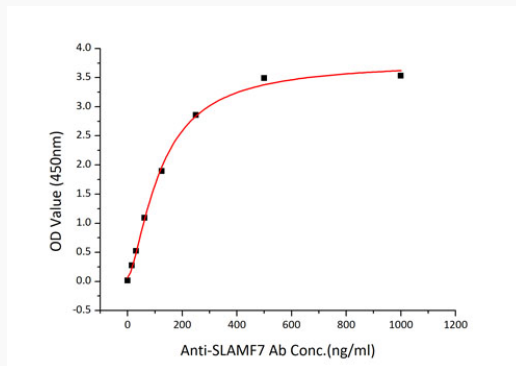
 Email: info@creative-biomart.com  Fax: 1-631-938-8127

 45-1 Ramsey Road, Shirley, NY 11967, USA

SDS-PAGE



Bio-activity



 Tel: 1-631-559-9269 1-516-512-3133

 Email: info@creative-biomart.com  Fax: 1-631-938-8127

 45-1 Ramsey Road, Shirley, NY 11967, USA