

## Recombinant Human SLAMF7 Protein, His-tagged

Cat. No. SLAMF7-2692H Lot. No. (See product label)

### SPECIFICATION

<b>Product Overview</b>	Recombinant Human SLAMF7 Protein (Ser23-Met226) with a N-His tag was expressed in E. coli.
<b>Species</b>	Human
<b>Source</b>	E.coli
<b>ProteinLength</b>	Ser23-Met226
<b>Description</b>	Enables identical protein binding activity. Predicted to be involved in adaptive immune response. Predicted to act upstream of or within regulation of natural killer cell activation. Located in endoplasmic reticulum.
<b>Form</b>	Freeze-dried powder
<b>Molecular Mass</b>	Predicted Molecular Mass: 26.1 kDa Accurate Molecular Mass: 28 kDa
<b>Endotoxin</b>	<1.0 EU per 1g (determined by the LAL method).
<b>Purity</b>	> 80%
<b>Applications</b>	Positive Control; Immunogen; SDS-PAGE; WB.
<b>Stability</b>	The thermal stability is described by the loss rate. The loss rate was determined by

 Tel: 1-631-559-9269 1-516-512-3133

 Email: [info@creative-biomart.com](mailto:info@creative-biomart.com)  Fax: 1-631-938-8127

 45-1 Ramsey Road, Shirley, NY 11967, USA

accelerated thermal degradation test, that is, incubate the protein at 37 centigrade for 48h, and no obvious degradation and precipitation were observed. The loss rate is less than 5% within the expiration date under appropriate storage condition.

**Storage**

Avoid repeated freeze/thaw cycles. Store at 2-8 centigrade for one month. Aliquot and store at -80 centigrade for 12 months.

**Storage Buffer**

20mM Tris, 150mM NaCl, pH8.0, containing 1mM EDTA, 1mM DTT, 0.01% SKL, 5% Trehalose and Proclin300.

**Reconstitution**

Reconstitute in 20mM Tris, 150mM NaCl (pH8.0) to a concentration of 0.1-1.0 mg/mL. Do not vortex.

## GENE INFORMATION

**Gene Name**

SLAMF7 SLAM family member 7 [ Homo sapiens (human) ]

**Official Symbol**

SLAMF7

**Synonyms**

SLAMF7; SLAM family member 7; 19A; CD319; CRACC; CS1; protein 19A; CD2 subset 1; 19A24 protein; membrane protein FOAP-12; CD2-like receptor activating cytotoxic cells; CD2-like receptor-activating cytotoxic cells; novel LY9 (lymphocyte antigen 9) like protein;

**Gene ID**

57823

**mRNA Refseq**

NM\_021181

**Protein Refseq**

NP\_067004

**MIM**

606625

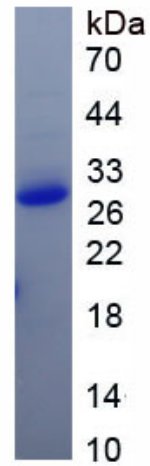
 Tel: 1-631-559-9269 1-516-512-3133

 Email: [info@creative-biomart.com](mailto:info@creative-biomart.com)  Fax: 1-631-938-8127

 45-1 Ramsey Road, Shirley, NY 11967, USA

UniProt ID

Q9NQ25



 Tel: 1-631-559-9269 1-516-512-3133

 Email: [info@creative-biomart.com](mailto:info@creative-biomart.com)  Fax: 1-631-938-8127

 45-1 Ramsey Road, Shirley, NY 11967, USA