

Recombinant Human SLAMF7 Protein (ECD), Fc-His-tagged(C-ter)

Cat. No. SLAMF7-294H Lot. No. (See product label)

SPECIFICATION

Product Overview	Recombinant Human SLAMF7 Protein (ECD) with Fc-His tag (C-ter) was expressed in HEK293.
Species	Human
Source	HEK293
ProteinLength	Ser23-Met226
Description	Enables identical protein binding activity. Predicted to be involved in adaptive immune response. Predicted to act upstream of or within regulation of natural killer cell activation. Located in endoplasmic reticulum.
Form	Powder
Endotoxin	Endotoxin level is less than 0.1 EU/μg of the protein, as determined by the LAL test.
Purity	> 95% (by SDS-PAGE)
Applications	Binding, ELISA, SDS-PAGE
Notes	For laboratory research only, not for drug, diagnostic or other use.
Storage	Lyophilized protein should be stored at -20°C or -80°C. After reconstitution, aliquot

 Tel: 1-631-559-9269 1-516-512-3133

 Email: info@creative-biomart.com  Fax: 1-631-938-8127

 45-1 Ramsey Road, Shirley, NY 11967, USA

and store at -20°C for up to one month, at 2-8°C for up to one week. Storage in frost free freezers is not recommended. Avoid repeated freeze/thaw cycles. Suggest spin the vial prior to opening.

Storage Buffer PBS (pH 7.4)

Reconstitution Reconstitute to a concentration of 0.1-0.5 mg/ml in sterile distilled water.

GENE INFORMATION

Gene Name [SLAMF7 SLAM family member 7 \[Homo sapiens \]](#)

Official Symbol [SLAMF7](#)

Synonyms SLAMF7; SLAM family member 7; 19A; CD319; CRACC; CS1; protein 19A; CD2 subset 1; 19A24 protein; membrane protein FOAP-12; CD2-like receptor activating cytotoxic cells; CD2-like receptor-activating cytotoxic cells; novel LY9 (lymphocyte antigen 9) like protein;

Gene ID [57823](#)

mRNA Refseq [NM_021181](#)

Protein Refseq [NP_067004](#)

MIM [606625](#)

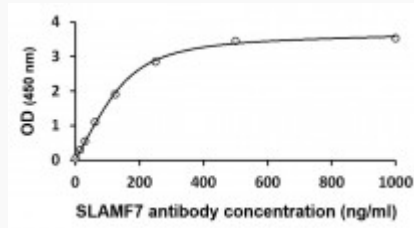
UniProt ID [Q9NQ25](#)

 Tel: 1-631-559-9269 1-516-512-3133

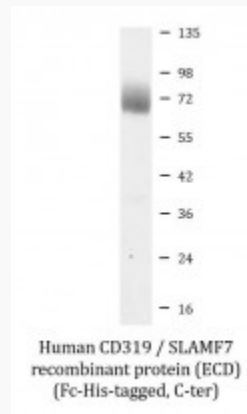
 Email: info@creative-biomart.com  Fax: 1-631-938-8127

 45-1 Ramsey Road, Shirley, NY 11967, USA

ELISA



SDS-PAGE



 Tel: 1-631-559-9269 1-516-512-3133

 Email: info@creative-biomart.com  Fax: 1-631-938-8127

 45-1 Ramsey Road, Shirley, NY 11967, USA