

Recombinant Mouse SLAMF7 protein, Mouse IgG2a Fc-tagged, low endotoxin

Cat. No. SLAMF7-352M Lot. No. (See product label)

SPECIFICATION

| | |
|-------------------------|---|
| Product Overview | Recombinant Mouse SLAMF7 protein (Ala22-Gly224)(low endotoxin), fused to Mouse IgG2a Fc tag at C-terminus, was expressed in human 293 cells (HEK293). |
| Species | Mouse |
| Source | HEK293 |
| ProteinLength | 203 |
| Description | SLAM family member 7 (SLAMF7) is also known as CD2-like receptor-activating cytotoxic cells (CRACC), Membrane protein FOAP-12, CD antigen CD319, Novel Ly9, Protein 19A, which is a single-pass type I membrane protein and a member of the CD2 family of cell surface receptors. SLAMF7 is expressed in spleen, lymph node, peripheral blood leukocytes, bone marrow, small intestine, stomach, appendix, lung and trachea. Isoform 1 of SLAMF7 mediates NK cell activation through a SH2D1A-independent extracellular signal-regulated ERK-mediated pathway. May play a role in lymphocyte adhesion. Isoform 3 of SLAMF7 does not mediate any NK cell activation. |
| Form | Lyophilized from 0.22 um filtered solution in 50 mM Tris, 100 mM Glycine, pH7.5, 10% trehalose. |
| Molecular Mass | The protein has a calculated MW of 49.4 kDa. The protein migrates as 55-70 kDa under reducing (R) condition (SDS-PAGE) due to glycosylation. |

 Tel: 1-631-559-9269 1-516-512-3133

 Email: info@creative-biomart.com  Fax: 1-631-938-8127

 45-1 Ramsey Road, Shirley, NY 11967, USA

| | |
|-----------------------|--|
| Endotoxin | Less than 0.1 EU per ug by the LAL method. |
| Purity | >95% as determined by SDS-PAGE. |
| Storage | <p>For long term storage, the product should be stored at lyophilized state at -20 centigrade or lower.</p> <p>Please avoid repeated freeze-thaw cycles.</p> <p>This product is stable after storage at:</p> <p>-20 centigrade to -70 centigrade for 12 months in lyophilized state; -70 centigrade for 3 months under sterile conditions after reconstitution.</p> |
| Reconstitution | It is recommended that sterile water be added to the vial to prepare a stock solution of 0.2 ug/ul. Centrifuge the vial at 4°C before opening to recover the entire contents. |

GENE INFORMATION

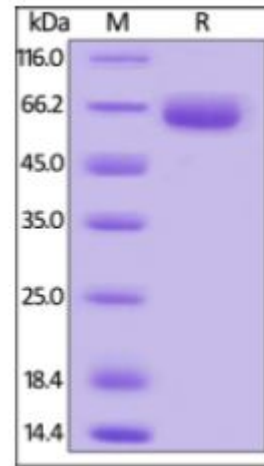
| | |
|------------------------|--|
| Gene Name | SLAMF7 |
| Official Symbol | SLAMF7 |
| Synonyms | SLAMF7; SLAM family member 7; novel Ly9; leukocyte cell-surface antigen; 19A; CS1; 19A24; CRACC; 4930560D03Rik |
| Gene ID | 75345 |
| mRNA Refseq | NM_144539 |
| Protein Refseq | NP_653122 |
| UniProt ID | Q8BHK6 |

 Tel: 1-631-559-9269 1-516-512-3133

 Email: info@creative-biomart.com  Fax: 1-631-938-8127

 45-1 Ramsey Road, Shirley, NY 11967, USA

**SDS-PAGE of
SLAMF7-352M**



Mouse SLAMF7, Mouse IgG2a Fc Tag, low endotoxin on SDS-PAGE under reducing (R) condition. The gel was stained overnight with Coomassie Blue. The purity of the protein is greater than 95%.

 Tel: 1-631-559-9269 1-516-512-3133

 Email: info@creative-biomart.com  Fax: 1-631-938-8127

 45-1 Ramsey Road, Shirley, NY 11967, USA