

## Recombinant Human SLAMF7 Protein (Ser23-Met226), C-hFc and 6xHis-tagged

Cat. No. SLAMF7-570H Lot. No. (See product label)

### SPECIFICATION

<b>Product Overview</b>	Recombinant Human SLAMF7 Protein (Ser23-Met226) with C-hFc and 6xHis tag was expressed in HEK293.
<b>Species</b>	Human
<b>Source</b>	HEK293
<b>ProteinLength</b>	Ser23-Met226
<b>Description</b>	SLAM family member 7 (SLAMF7) is also known as CD2-like receptor-activating cytotoxic cells (CRACC), Membrane protein FOAP-12, CD antigen CD319, Novel Ly9, Protein 19A, which is a single-pass type I membrane protein and a member of the CD2 family of cell surface receptors. SLAMF7 is expressed in spleen, lymph node, peripheral blood leukocytes, bone marrow, small intestine, stomach, appendix, lung and trachea. Isoform 1 of SLAMF7 mediates NK cell activation through a SH2D1A-independent extracellular signal-regulated ERK-mediated pathway. May play a role in lymphocyte adhesion. Isoform 3 of SLAMF7 does not mediate any NK cell activation.
<b>Form</b>	Lyophilized
<b>Molecular Mass</b>	70 kDa
<b>Purity</b>	> 95% as determined by SDS-PAGE and Coomassie blue staining.

 Tel: 1-631-559-9269 1-516-512-3133

 Email: [info@creative-biomart.com](mailto:info@creative-biomart.com)  Fax: 1-631-938-8127

 45-1 Ramsey Road, Shirley, NY 11967, USA

**Storage** Store at -80 centigrade for 12 months (Avoid repeated freezing and thawing)

**Storage Buffer** Lyophilized from sterile PBS, pH 7.4. Normally 5 % - 9 % trehalose is added as protectants before lyophilization.

## GENE INFORMATION

**Gene Name** [SLAMF7](#) SLAM family member 7 [ Homo sapiens (human) ]

**Official Symbol** [SLAMF7](#)

**Synonyms** SLAMF7; SLAM family member 7; 19A; CS1; CD319; CRACC; SLAM family member 7; 19A24 protein; CD2 subset 1; CD2-like receptor activating cytotoxic cells; membrane protein FOAP-12; novel LY9 (lymphocyte antigen 9) like protein; protein 19A

**Gene ID** [57823](#)

**mRNA Refseq** [NM\\_021181](#)

**Protein Refseq** [NP\\_067004](#)

**MIM** [606625](#)

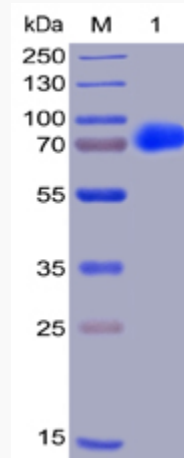
**UniProt ID** [A8K3U1](#)

 Tel: 1-631-559-9269 1-516-512-3133

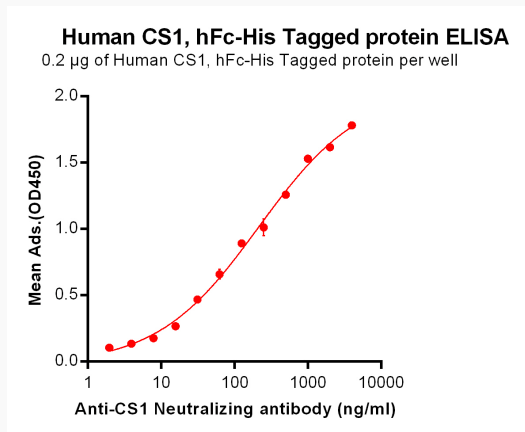
 Email: [info@creative-biomart.com](mailto:info@creative-biomart.com)  Fax: 1-631-938-8127


 45-1 Ramsey Road, Shirley, NY 11967, USA

**SDS-PAGE**




**Activity**



 Tel: 1-631-559-9269 1-516-512-3133

 Email: [info@creative-biomart.com](mailto:info@creative-biomart.com)  Fax: 1-631-938-8127

 45-1 Ramsey Road, Shirley, NY 11967, USA