

Recombinant Human SLAMF7 Protein (Ser23-Ser225), C-His tagged

Cat. No. SLAMF7-6102H Lot. No. (See product label)

SPECIFICATION

Product Overview	Recombinant human SLAMF7 (Ser23-Ser225) fused with the C-terminal His tag was expressed in mammalian cells.
Species	Human
Source	Mammalian Cells
ProteinLength	Ser23-Ser225
Form	Lyophilized powder/frozen liquid
Molecular Mass	22.33 kDa
Purity	> 90 % as determined by SDS-PAGE
Notes	For research use only.
Storage	Use a manual defrost freezer and avoid repeated freeze thaw cycles. Store at 2 to 8 centigrade for one week. Store at -20 to -80 centigrade for twelve months from the date of receipt.
Storage Buffer	Supplied as solution form in PBS or lyophilized from PBS.
Reconstitution	Reconstitute in sterile water for a stock solution.

 Tel: 1-631-559-9269 1-516-512-3133

 Email: info@creative-biomart.com  Fax: 1-631-938-8127

 45-1 Ramsey Road, Shirley, NY 11967, USA

Shipping They are shipped out with dry ice/blue ice unless customers require otherwise.

GENE INFORMATION

Gene Name [SLAMF7 SLAM family member 7 \[Homo sapiens \(human\) \]](#)

Official Symbol [SLAMF7](#)

Synonyms SLAMF7; SLAM family member 7; 19A; CD319; CRACC; CS1; protein 19A; CD2 subset 1; 19A24 protein; membrane protein FOAP-12; CD2-like receptor activating cytotoxic cells; CD2-like receptor-activating cytotoxic cells; novel LY9 (lymphocyte antigen 9) like protein;

Gene ID [57823](#)

mRNA Refseq [NM_021181](#)

Protein Refseq [NP_067004](#)

MIM [606625](#)

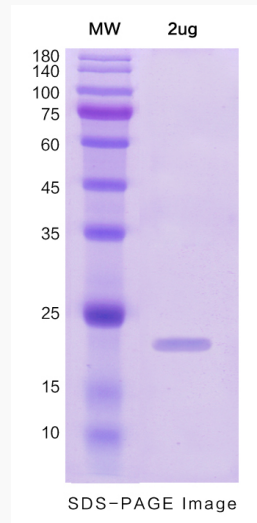
UniProt ID [Q9NQ25](#)

 Tel: 1-631-559-9269 1-516-512-3133

 Email: info@creative-biomart.com  Fax: 1-631-938-8127

 45-1 Ramsey Road, Shirley, NY 11967, USA

SDS-PAGE



 Tel: 1-631-559-9269 1-516-512-3133

 Email: info@creative-biomart.com  Fax: 1-631-938-8127

 45-1 Ramsey Road, Shirley, NY 11967, USA