

Recombinant Human SLAMF7 protein, mFc-tagged

Cat. No. SLAMF7-925H Lot. No. (See product label)

SPECIFICATION

Product Overview	Recombinant Human SLAMF7 protein(Q9NQ25-1)(Ser23-Met226), fused with C-terminal mFc tag, was expressed in HEK293.
Species	Human
Source	HEK293
ProteinLength	Ser23-Met226
Tag	C-mFc
Form	Lyophilized from 0.22µm filtered solution in PBS (pH 7.4). Normally 5% trehalose is added as protectant before lyophilization.
Bio-activity	Immobilized Human SLAMF7, mFc Tag at 1µg/ml (100µl/Well). Dose response curve for Anti-SLAMF7 Antibody, hFc Tag with the EC50 of 15.7ng/ml determined by ELISA.
Molecular Mass	The protein has a predicted MW of 48.8 kDa. Due to glycosylation, the protein migrates to 68-72 kDa based on Tris-Bis PAGE result.
Endotoxin	Less than 1EU per µg by the LAL method.
Purity	> 95% as determined by Tris-Bis PAGE; > 95% as determined by HPLC

 Tel: 1-631-559-9269 1-516-512-3133

 Email: info@creative-biomart.com  Fax: 1-631-938-8127

 45-1 Ramsey Road, Shirley, NY 11967, USA

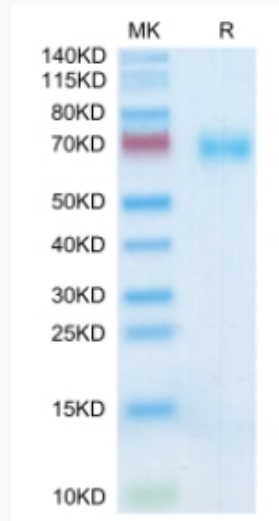
Storage	Reconstituted protein stable at -80°C for 12 months, 4°C for 1 week. Use a manual defrost freezer and avoid repeated freeze-thaw cycles.
Reconstitution	Centrifuge tubes before opening. Reconstituting to a concentration more than 100 µg/ml is recommended. Dissolve the lyophilized protein in distilled water.
GENE INFORMATION	
Gene Name	SLAMF7 SLAM family member 7 [Homo sapiens]
Official Symbol	SLAMF7
Synonyms	SLAMF7; SLAM family member 7; 19A; CD319; CRACC; CS1; protein 19A; CD2 subset 1; 19A24 protein; membrane protein FOAP-12; CD2-like receptor activating cytotoxic cells; CD2-like receptor-activating cytotoxic cells; novel LY9 (lymphocyte antigen 9) like protein;
Gene ID	57823
mRNA Refseq	NM_021181
Protein Refseq	NP_067004
MIM	606625
UniProt ID	Q9NQ25

 Tel: 1-631-559-9269 1-516-512-3133

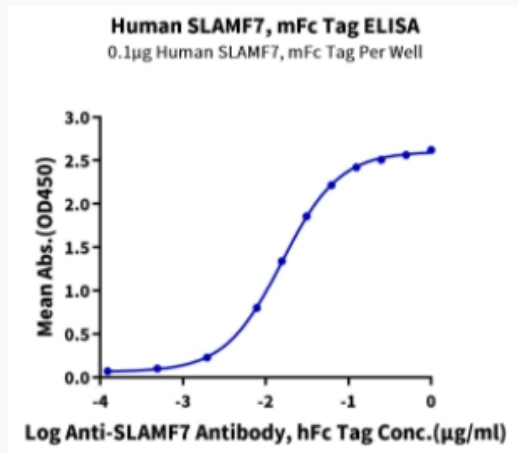
 Email: info@creative-biomart.com  Fax: 1-631-938-8127

 45-1 Ramsey Road, Shirley, NY 11967, USA

Tris-Bis PAGE



ELISA Data



 Tel: 1-631-559-9269 1-516-512-3133

 Email: info@creative-biomart.com  Fax: 1-631-938-8127

 45-1 Ramsey Road, Shirley, NY 11967, USA