

## Recombinant Human SLAMF8 Protein, C-His-tagged

Cat. No. SLAMF8-120H Lot. No. (See product label)

### SPECIFICATION

<b>Product Overview</b>	Recombinant Human SLAMF8 Protein with C-His tag was expressed in E. coli.
<b>Species</b>	Human
<b>Source</b>	E.coli
<b>Description</b>	SLAMF8, may play a role in B-lineage commitment and/or modulation of signaling through the B-cell receptor.
<b>Molecular Mass</b>	~23 kDa
<b>AA Sequence</b>	AQVLSKVGGSVLLVAARPPGFQVREAIWRSLWPSEELLATFFRGSLETLYHSRFLGR AQLHSNLSLELGPLES GDSGNFSVLMVDTRGQPWTQTLQLKVYDAVPRPVVQVFIA VERDAQPSKTCQVFLSCWAPNISEITYSWRRETTMDFGMEPHSLFTDGQVLSISLG PGDRDVAYSCIVSNPVSWDLATVTPWDSCHHEAAPGKASYKD
<b>Purity</b>	Transferred into competent cells and the supernatant was purified by NI column affinity chromatography and the purity is > 85% (by SDS-PAGE).
<b>Notes</b>	For research use only, not for use in diagnostic procedure.
<b>Storage</b>	Store at 4 centigrade short term. Aliquot and store at -20 centigrade long term. Avoid freeze-thaw cycles.
<b>Concentration</b>	≥0.5 mg/mL

 Tel: 1-631-559-9269 1-516-512-3133

 Email: [info@creative-biomart.com](mailto:info@creative-biomart.com)  Fax: 1-631-938-8127

 45-1 Ramsey Road, Shirley, NY 11967, USA

**Storage Buffer**                      PBS, 4M Urea, pH7.4

## GENE INFORMATION

**Gene Name**                              SLAMF8 SLAM family member 8 [ Homo sapiens (human) ]

**Official Symbol**                        SLAMF8

**Synonyms**                                SLAMF8; SLAM family member 8; BLAME; CD353; SBBI42; BCM-like membrane protein; B lymphocyte activator macrophage expressed; B-lymphocyte activator macrophage expressed; FLJ20442; MGC129578;

**Gene ID**                                    56833

**mRNA Refseq**                            NM\_020125

**Protein Refseq**                          NP\_064510

**MIM**                                        606620

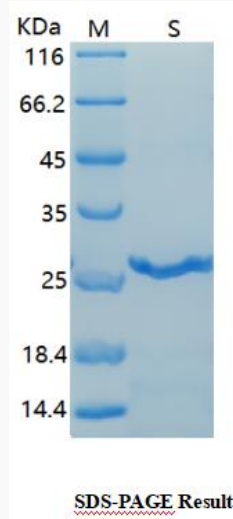
**UniProt ID**                                Q9P0V8

 Tel: 1-631-559-9269    1-516-512-3133

 Email: [info@creative-biomart.com](mailto:info@creative-biomart.com)     Fax: 1-631-938-8127

 45-1 Ramsey Road, Shirley, NY 11967, USA

**SDS-PAGE**



 Tel: 1-631-559-9269 1-516-512-3133

 Email: [info@creative-biomart.com](mailto:info@creative-biomart.com)  Fax: 1-631-938-8127

 45-1 Ramsey Road, Shirley, NY 11967, USA