

Recombinant Human SLAMF9 Protein, Myc/DDK-tagged, C13 and N15-labeled

Cat. No. SLAMF9-2869H **Lot. No.** (See product label)

SPECIFICATION

Product Overview	SLAMF9 MS Standard C13 and N15-labeled recombinant protein (NP_254273) with a C-terminal MYC/DDK tag, was expressed in HEK293 cells.
Species	Human
Source	HEK293
Description	This gene encodes a member of the signaling lymphocytic activation molecule family. The encoded protein is a cell surface molecule that consists of two extracellular immunoglobulin domains, a transmembrane domain and a short cytoplasmic tail that lacks the signal transduction motifs found in other family members. Alternative splicing results in multiple transcript variants.
Molecular Mass	32.4 kDa
AA Sequence	MCAFPWLLLLLLLLQEGSQRRLLWRWCGSEEVAVLQESISLPLEIPPDEEVENIIWSS HKSLATVVPKGEGHPATIMVTNPHYQGQVSFLDPSYSLHISNLSWEDSGLYQAQVN LRTSQISTMQQYNLCVYRWLSEPIQITVNFESSGEGACSMMLVCSVEKAGMDMTYS WLSRGDSTYTFHEGPVLSTSWRPGDSALSYTCRANNPISNVSSCPIPDPGFYADPN YASEKPSTAFCLLAKGLLIFLLLIVLAMGLWVIRVQKRHKMPRMKMLMRNRMKLRKE AKPGSSPATRTRPLEQKLISEEDLAANDILDYKDDDDKV
Purity	> 80% as determined by SDS-PAGE and Coomassie blue staining

 Tel: 1-631-559-9269 1-516-512-3133

 Email: info@creative-biomart.com  Fax: 1-631-938-8127

 45-1 Ramsey Road, Shirley, NY 11967, USA

Stability	Stable for 3 months from receipt of products under proper storage and handling conditions.
Storage	Store at -80 centigrade. Avoid repeated freeze-thaw cycles.
Concentration	50 µg/mL as determined by BCA
Storage Buffer	100 mM glycine, 25 mM Tris-HCl, pH 7.3.

GENE INFORMATION

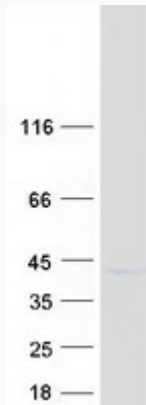
Gene Name	SLAMF9 SLAM family member 9 [Homo sapiens (human)]
Official Symbol	SLAMF9
Synonyms	CD2F10; CD84H1; SF2001; CD2F-10; CD84-H1
Gene ID	89886
mRNA Refseq	NM_033438
Protein Refseq	NP_254273
MIM	608589
UniProt ID	Q96A28

 Tel: 1-631-559-9269 1-516-512-3133

 Email: info@creative-biomart.com  Fax: 1-631-938-8127

 45-1 Ramsey Road, Shirley, NY 11967, USA

SDS-PAGE



 Tel: 1-631-559-9269 1-516-512-3133

 Email: info@creative-biomart.com  Fax: 1-631-938-8127

 45-1 Ramsey Road, Shirley, NY 11967, USA