

Recombinant Human SLC10A1 Protein, His&GST-tagged

Cat. No. SLC10A1-2059H Lot. No. (See product label)

SPECIFICATION

Product Overview	Recombinant Human SLC10A1 Protein (Ser241-Ala349) with N-His&GST tag was expressed in E. coli.
Species	Human
Source	E.coli
ProteinLength	Ser241-Ala349
Description	The protein encoded by this gene belongs to the sodium/bile acid cotransporter family, which are integral membrane glycoproteins that participate in the enterohepatic circulation of bile acids. Two homologous transporters are involved in the reabsorption of bile acids; the ileal sodium/bile acid cotransporter with an apical cell localization that absorbs bile acids from the intestinal lumen, bile duct and kidney, and the liver-specific sodium/bile acid cotransporter, represented by this protein, that is found in the basolateral membranes of hepatocytes. Bile acids are the catabolic product of cholesterol metabolism, hence this protein is important for cholesterol homeostasis.
Form	Freeze-dried powder
Molecular Mass	Predicted Molecular Mass: 42.1 kDa Accurate Molecular Mass: 45 kDa
Purity	> 90%

 Tel: 1-631-559-9269 1-516-512-3133

 Email: info@creative-biomart.com  Fax: 1-631-938-8127

 45-1 Ramsey Road, Shirley, NY 11967, USA

Applications	Positive Control; Immunogen; SDS-PAGE; WB.
Stability	The thermal stability is described by the loss rate. The loss rate was determined by accelerated thermal degradation test, that is, incubate the protein at 37 centigrade for 48h, and no obvious degradation and precipitation were observed. The loss rate is less than 5% within the expiration date under appropriate storage condition.
Storage	Avoid repeated freeze/thaw cycles. Store at 2-8 centigrade for one month. Aliquot and store at -80 centigrade for 12 months.
Storage Buffer	20mM Tris, 150mM NaCl, pH8.0, containing 1mM EDTA, 1mM DTT, 0.01% SKL, 5% Trehalose and Proclin300.
Reconstitution	Reconstitute in 20mM Tris, 150mM NaCl (pH8.0) to a concentration of 0.1-1.0 mg/mL. Do not vortex.

GENE INFORMATION

Gene Name	SLC10A1 solute carrier family 10 member 1 [Homo sapiens (human)]
Official Symbol	SLC10A1
Synonyms	SLC10A1; solute carrier family 10 member 1; NTCP; FHCA2; sodium/bile acid cotransporter; Na(+)/bile acid cotransporter; Na(+)/taurocholate transport protein; Na/taurocholate cotransporting polypeptide; cell growth-inhibiting gene 29 protein; growth-inhibiting protein 29; sodium/taurocholate cotransporter; sodium/taurocholate cotransporting polypeptide; solute carrier family 10 (sodium/bile acid cotransporter family), member 1; solute carrier family 10 (sodium/bile acid cotransporter), member 1
Gene ID	6554

 Tel: 1-631-559-9269 1-516-512-3133

 Email: info@creative-biomart.com  Fax: 1-631-938-8127

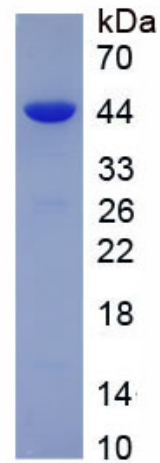
 45-1 Ramsey Road, Shirley, NY 11967, USA

mRNA Refseq [NM_003049](#)

Protein Refseq [NP_003040](#)

MIM [182396](#)

UniProt ID [Q14973](#)



 Tel: 1-631-559-9269 1-516-512-3133

 Email: info@creative-biomart.com  Fax: 1-631-938-8127

 45-1 Ramsey Road, Shirley, NY 11967, USA