

Recombinant Full Length Human SLC10A1 Protein, C-Flag-tagged

Cat. No. SLC10A1-413HFL **Lot. No.** (See product label)

SPECIFICATION

Product Overview	Recombinant Full Length Human SLC10A1 Protein, fused to Flag-tag at C-terminus, was expressed in Mammalian cells.
Species	Human
Source	Mammalian Cells
Description	The protein encoded by this gene belongs to the sodium/bile acid cotransporter family, which are integral membrane glycoproteins that participate in the enterohepatic circulation of bile acids. Two homologous transporters are involved in the reabsorption of bile acids; the ileal sodium/bile acid cotransporter with an apical cell localization that absorbs bile acids from the intestinal lumen, bile duct and kidney, and the liver-specific sodium/bile acid cotransporter, represented by this protein, that is found in the basolateral membranes of hepatocytes. Bile acids are the catabolic product of cholesterol metabolism, hence this protein is important for cholesterol homeostasis.
Form	25 mM Tris HCl, pH 7.3, 100 mM glycine, 10% glycerol.
Molecular Mass	37.9 kDa
AA Sequence	MEAHNASAPFNFTLPPNFGKRPTDLALSIVLVMFLFFIMLSLGCTMEFSKIKAHLWKP KGLAIALVAQYG IMPLTAFVLGKVFRLKNIEALAILVCGCSPGGNLSNVFSLAMKGD NLSIVMTTCSTFCALGMMPLLLYI YSRGIYDGDLDKDKVPYKGVISLVLVLIPTIGIVLK

 Tel: 1-631-559-9269 1-516-512-3133

 Email: info@creative-biomart.com  Fax: 1-631-938-8127

 45-1 Ramsey Road, Shirley, NY 11967, USA

SKRPQYMRYVIKGGMIILLCSVAVTVLSAINV GKSIMFAMTPLLIATSSLMPFIGFLLG
 YVLSALFCLNGRCRRTVSMETGCQNVQLCSTILNVAFPPEVIG PLFFFPLLYMIFQLG
 EGLLLIAIFWCYEFKFKTPKDKTKMIYTAATTEETIPGALGNGTYKGEDCSPCTASGPT
 RTRRLEQKLISEEDLAANDILDYKDDDDKV

Purity > 80% as determined by SDS-PAGE and Coomassie blue staining.

Stability Stable for 12 months from the date of receipt of the product under proper storage and handling conditions. Avoid repeated freeze-thaw cycles.

Storage Store at -80 centigrade.

Concentration >50 ug/mL as determined by microplate BCA method.

Preparation Recombinant protein was captured through anti-DDK affinity column followed by conventional chromatography steps.

Protein Families Druggable Genome, Transmembrane

Full Length Full L.

GENE INFORMATION

Gene Name [SLC10A1 solute carrier family 10 member 1 \[Homo sapiens \(human\) \]](#)

Official Symbol [SLC10A1](#)

Synonyms NTCP; FHCA2

Gene ID [6554](#)

 Tel: 1-631-559-9269 1-516-512-3133

 Email: info@creative-biomart.com  Fax: 1-631-938-8127

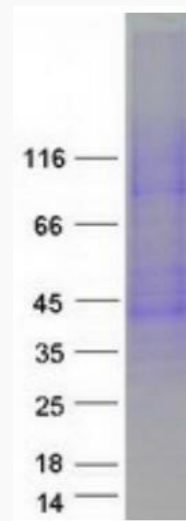
 45-1 Ramsey Road, Shirley, NY 11967, USA

mRNA Refseq [NM_003049.4](#)

Protein Refseq [NP_003040.1](#)

MIM [182396](#)

UniProt ID [Q14973](#)



Coomassie blue staining of purified SLC10A1 protein.

 Tel: 1-631-559-9269 1-516-512-3133

 Email: info@creative-biomart.com  Fax: 1-631-938-8127

 45-1 Ramsey Road, Shirley, NY 11967, USA