

Recombinant Cynomolgus Monkey SLC10A1 Protein, His tagged

Cat. No. SLC10A1-921C Lot. No. (See product label)

SPECIFICATION

Product Overview	Recombinant Cynomolgus Monkey SLC10A1 Protein with His tag was expressed in E. coli.
Species	Monkey
Source	E.coli
ProteinLength	1-349 aa
Description	The hepatic sodium/bile acid uptake system exhibits broad substrate specificity and transports various non-bile acid organic compounds as well. It is strictly dependent on the extracellular presence of sodium.
AASequence	<p>MEAHNASAPFNFTLPPNFGKRPTDLALSILVFMLFFVMLSLGCTMEFSKIKAHLWKP KGLAIALVAQYGIMPLTAFVLGKVFQLNNEALAILVCGCSPGGNLSNVFSLAMKGM NLSIVMTTCSTFCALGMMPLLLYLYTRGIYDGDLDKDKVPYGRILSLVPVLIPCTIGIVLK SKRPQYMRYVIKGGMIILLCSVAVTVLSAINVGKSIMFAMTPLLIATSSLMPFIGFLLG YVLSALFCLNGRCRRTVSMETGCQNVQLCSTILNVAFPPEVIGPLFFFPLLYMIFQLG EGLLLIAMFRCYEKFKTPKDKTKMIYTAATTEETIPGALGNGTYKGEDCSPCTA</p>
Molecular Mass	39.6 kDa
Purity	≥ 85% by SDS-PAGE

 Tel: 1-631-559-9269 1-516-512-3133

 Email: info@creative-biomart.com  Fax: 1-631-938-8127

 45-1 Ramsey Road, Shirley, NY 11967, USA

Storage	Store it under sterile conditions at -20 to -80 centigrade. It is recommended that the protein be aliquoted for optimal storage. Avoid repeated freeze-thaw cycles.
Storage Buffer	Lyophilized from PBS, 0.05% Brij78, 6% Trehalose, pH7.4 The volume before lyophilization is 118µl/vial.
Reconstitution	We recommend that this vial be briefly centrifuged prior to opening to bring the contents to the bottom. Please reconstitute protein in deionized sterile water to a concentration of 0.1-1.0 mg/mL. We recommend to add 5-50% of glycerol (final concentration) and aliquot for long-term storage at -20/-80 centigrade. Our default final concentration of glycerol is 50%. Customers could use it as reference.

GENE INFORMATION

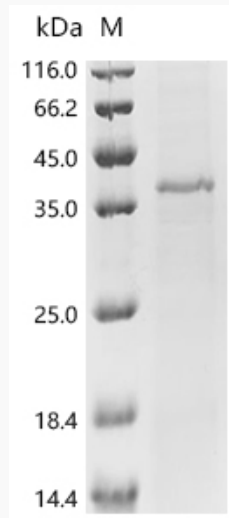
Gene ID	712925
Gene Name	SLC10A1 solute carrier family 10 member 1 [<i>Macaca mulatta</i> (Rhesus monkey)]
Official Symbol	SLC10A1
Synonyms	SLC10A1; solute carrier family 10 member 1; Ntcp; sodium/bile acid cotransporter; solute carrier family 10 (sodium/bile acid cotransporter family), member 1; solute carrier family 10 member a1
mRNA Refseq	XM_001110268
Protein Refseq	XP_001110268
UniProt ID	F6YRK3
Official Symbol 2	SLC10A1

 Tel: 1-631-559-9269 1-516-512-3133

 Email: info@creative-biomart.com  Fax: 1-631-938-8127

 45-1 Ramsey Road, Shirley, NY 11967, USA

Gene ID 2	712925
Gene Name 2	SLC10A1 solute carrier family 10 member 1 [<i>Macaca mulatta</i> (Rhesus monkey)]
mRNA Refseq 2	XM_001110268
Protein Refseq 2	XP_001110268
UniProt ID 2	G7MYJ1

SDS-PAGE

Tel: 1-631-559-9269 1-516-512-3133

Email: info@creative-biomart.com Fax: 1-631-938-8127

45-1 Ramsey Road, Shirley, NY 11967, USA