

Recombinant Human SLC10A7 Protein, GST-tagged

Cat. No. SLC10A7-4044H Lot. No. (See product label)

SPECIFICATION

Product Overview	Human DKFZP566M114 full-length ORF (AAH63471, 1 a.a. - 159 a.a.) recombinant protein with GST-tag at N-terminal.
Species	Human
Source	Wheat Germ
Description	SLC10A7 (Solute Carrier Family 10 Member 7) is a Protein Coding gene. GO annotations related to this gene include symporter activity.
Molecular Mass	43.23 kDa
AA Sequence	MRLLERMRKDWFMV/GIVLAIAGAKLEPSIGVNGGPLKPEITVSYIAVATIFFNSGLSLK TEELTSALVHLKLHLFIQIFTLAFFPATIWFLQLLSITPINEWLLKGLQTVGCMPPPV SAVILTKAVGGNEAAAFNSAFGSFLVSKHSLTCLLQLLL
Applications	Enzyme-linked Immunoabsorbent Assay Western Blot (Recombinant protein) Antibody Production Protein Array
Notes	Best use within three months from the date of receipt of this protein.
Storage	Store at -80 centigrade. Aliquot to avoid repeated freezing and thawing.

 Tel: 1-631-559-9269 1-516-512-3133

 Email: info@creative-biomart.com  Fax: 1-631-938-8127

 45-1 Ramsey Road, Shirley, NY 11967, USA

Storage Buffer 50 mM Tris-HCl, 10 mM reduced Glutathione, pH=8.0 in the elution buffer.

GENE INFORMATION

Gene Name SLC10A7 solute carrier family 10 (sodium/bile acid cotransporter family), member 7 [Homo sapiens]

Official Symbol SLC10A7

Synonyms SLC10A7; solute carrier family 10 (sodium/bile acid cotransporter family), member 7; C4orf13, chromosome 4 open reading frame 13; sodium/bile acid cotransporter 7; DKFZp313H0531; DKFZp566M114; DKFZp779O2438; MGC25043; SBF-domain containing protein; Na(+)/bile acid cotransporter 7; solute carrier family 10 member 7; P7; C4orf13;

Gene ID 84068

mRNA Refseq NM_001029998

Protein Refseq NP_001025169

MIM 611459

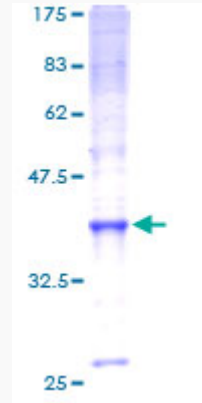
UniProt ID Q0GE19

 Tel: 1-631-559-9269 1-516-512-3133

 Email: info@creative-biomart.com  Fax: 1-631-938-8127

 45-1 Ramsey Road, Shirley, NY 11967, USA

**Quality Control
Testing**



12.5% SDS-PAGE Stained with Coomassie Blue.

 Tel: 1-631-559-9269 1-516-512-3133

 Email: info@creative-biomart.com  Fax: 1-631-938-8127

 45-1 Ramsey Road, Shirley, NY 11967, USA