

## Recombinant Human SLC12A6 protein, His & GST-tagged

Cat. No. SLC12A6-1728H Lot. No. (See product label)

### SPECIFICATION

<b>Product Overview</b>	Recombinant Human SLC12A6 aa. (Glu559~Ser735 (Accession # Q9UHW9)) fused with N-terminal His & GST tag was produced in E. coli cells.
<b>Species</b>	Human
<b>Source</b>	E.coli
<b>ProteinLength</b>	Glu559~Ser735
<b>Form</b>	Freeze-dried powder
<b>Molecular Mass</b>	Predicted Molecular Mass: 49.9kDa
<b>Endotoxin</b>	<1.0EU per 1ug (determined by the LAL method)
<b>Purity</b>	>95%
<b>Characteristic</b>	The isoelectric point is 9.
<b>Applications</b>	SDS-PAGE; WB; ELISA; IP.
<b>Stability</b>	The thermal stability is described by the loss rate of the target protein. The loss rate was determined by accelerated thermal degradation test, that is, incubate the protein at 37°C for 48h, and no obvious degradation and precipitation were observed. (Referring from China Biological Products Standard, which was calculated by the

 Tel: 1-631-559-9269 1-516-512-3133

 Email: [info@creative-biomart.com](mailto:info@creative-biomart.com)  Fax: 1-631-938-8127

 45-1 Ramsey Road, Shirley, NY 11967, USA

Arrhenius equation.) The loss of this protein is less than 5% within the expiration date under appropriate storage condition.

**Storage**

Avoid repeated freeze/thaw cycles. Store at 2-8°C for one month. Aliquot and store at -80°C for 12 months.

**Storage buffer**

Supplied as lyophilized form in PBS, pH7.4, containing 5% trehalose, 0.01% sarcosyl.

**Reconstitution**

Reconstitute in sterile PBS, pH7.2-pH7.4.

## GENE INFORMATION

**Gene Name**

[SLC12A6 solute carrier family 12 member 6 \[ Homo sapiens \(human\) \]](#)

**Official Symbol**

[SLC12A6](#)

**Synonyms**

SLC12A6; solute carrier family 12 member 6; KCC3; ACCPN; KCC3A; KCC3B; solute carrier family 12 member 6; K-Cl cotransporter 3; electroneutral potassium-chloride cotransporter 3; potassium chloride cotransporter 3; potassium chloride cotransporter KCC3a-S3; potassium-chloride transporter-3a; potassium-chloride transporter-3b; solute carrier family 12 (potassium/chloride transporter), member 6; solute carrier family 12 (potassium/chloride transporters), member 6

**Gene ID**

[9990](#)

**mRNA Refseq**

[NM\\_001042494.1](#)

**Protein Refseq**

[NP\\_001035959.1](#)

**UniProt ID**

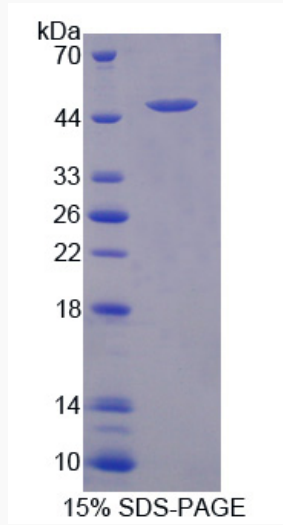
[Q9UHW9](#)

 Tel: 1-631-559-9269 1-516-512-3133

 Email: [info@creative-biomart.com](mailto:info@creative-biomart.com)  Fax: 1-631-938-8127

 45-1 Ramsey Road, Shirley, NY 11967, USA

**SDS-PAGE**



 Tel: 1-631-559-9269 1-516-512-3133

 Email: [info@creative-biomart.com](mailto:info@creative-biomart.com)  Fax: 1-631-938-8127

 45-1 Ramsey Road, Shirley, NY 11967, USA