

Recombinant Human SLC12A7 protein, His & T7-tagged

Cat. No. SLC12A7-1727H Lot. No. (See product label)

SPECIFICATION

Product Overview	Recombinant Human SLC12A7 aa. (His845~Glu1056 (Accession # Q9Y666)) fused with N-terminal His & T7 tag was produced in E. coli cells.
Species	Human
Source	E.coli
ProteinLength	His845~Glu1056
Form	Freeze-dried powder
Molecular Mass	Predicted Molecular Mass: 28.5kDa
Endotoxin	<1.0EU per 1ug (determined by the LAL method)
Purity	>95%
Characteristic	The isoelectric point is 9.2.
Applications	SDS-PAGE; WB; ELISA; IP.
Stability	The thermal stability is described by the loss rate of the target protein. The loss rate was determined by accelerated thermal degradation test, that is, incubate the protein at 37°C for 48h, and no obvious degradation and precipitation were observed. (Referring from China Biological Products Standard, which was calculated by the

 Tel: 1-631-559-9269 1-516-512-3133

 Email: info@creative-biomart.com  Fax: 1-631-938-8127

 45-1 Ramsey Road, Shirley, NY 11967, USA

Arrhenius equation.) The loss of this protein is less than 5% within the expiration date under appropriate storage condition.

Storage

Avoid repeated freeze/thaw cycles. Store at 2-8°C for one month. Aliquot and store at -80°C for 12 months.

Storage buffer

Supplied as lyophilized form in PBS, pH7.4, containing 5% trehalose, 0.01% sarcosyl.

Reconstitution

Reconstitute in sterile PBS, pH7.2-pH7.4.

GENE INFORMATION

Gene Name

SLC12A7 solute carrier family 12 member 7 [Homo sapiens (human)]

Official Symbol

SLC12A7

Synonyms

SLC12A7; solute carrier family 12 member 7; KCC4; solute carrier family 12 member 7; K-Cl cotransporter 4; electroneutral potassium-chloride cotransporter 4; potassium/chloride transporter KCC4; solute carrier family 12 (potassium/chloride transporter), member 7; solute carrier family 12 (potassium/chloride transporters), member 7

Gene ID

10723

mRNA Refseq

NM_006598.2

Protein Refseq

NP_006589.2

UniProt ID

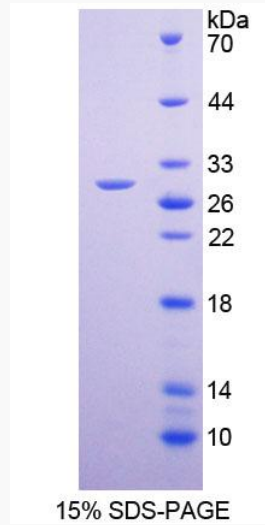
Q9Y666

 Tel: 1-631-559-9269 1-516-512-3133

 Email: info@creative-biomart.com  Fax: 1-631-938-8127

 45-1 Ramsey Road, Shirley, NY 11967, USA

SDS-PAGE



 Tel: 1-631-559-9269 1-516-512-3133

 Email: info@creative-biomart.com  Fax: 1-631-938-8127

 45-1 Ramsey Road, Shirley, NY 11967, USA