

Recombinant Human SLC13A3 Protein, GST-tagged

Cat. No. SLC13A3-672H Lot. No. (See product label)

SPECIFICATION

Product Overview	Recombinant Human SLC13A3 Full-Length ORF Protein (1-602 aa) is produced by Wheat Germ (in vitro) expression system. This protein is fused with a GST tag at the N-terminal.
Species	Human
Source	Wheat Germ
ProteinLength	1-602 aa
Description	Mammalian sodium-dicarboxylate cotransporters transport succinate and other Krebs cycle intermediates. They fall into 2 categories based on their substrate affinity: low affinity and high affinity. Both the low- and high-affinity transporters play an important role in the handling of citrate by the kidneys. The protein encoded by this gene represents the high-affinity form. Alternatively spliced transcript variants encoding different isoforms have been found for this gene, although the Full-Length nature of some of them have not been characterized yet.
Form	50 mM Tris-HCl, 10 mM reduced Glutathione, pH=8.0 in the elution buffer.
Molecular Mass	93.2 kDa
AA Sequence	MAALAAAAKKVWSARRLLVLLFTPLALLPVVFALPPKEGRCLFVILLMAVYWCTEALP LSVTALLPIVLFPMGILPSNKVCPQYFLDTNFLFLSGLIMASAIIEWNLHRRRIALKILM

 Tel: 1-631-559-9269 1-516-512-3133

 Email: info@creative-biomart.com  Fax: 1-631-938-8127

 45-1 Ramsey Road, Shirley, NY 11967, USA

LVGVQPARLILGMMVTTSFLSMWLSNTASTAMMLPIANAILKSLFGQKEVRKDPSQE
 SEENTAARRNGLHTVPTMQFLASTEAKDHPGETEVPLDLPADSRKEDEYRRNIW
 KGFLISIPYSASIGGTATLTGTAPNLILLGQLKSFFPQCDVVNFGSWFIFAFPLMLLFL
 AGWLWISFLYGGLSFRGWKKNKSEIRTN AEDRARA VIREEYQNLGPIKFAEQAVFILF
 CMFAILL FTRDPKFIPGWASLFNPGFLSDAVTGVAIVTILFFFPSQRPSL KWWFDFKA
 PNTETEPLLTWKKAQETVPWNIILLGGGFAMAKGCEESGLSVWIGGQLHPLENVPP
 ALAVLLITVVIAFFTEFASNTATIIIFLPVLAELAIRLRVHPLYLMIPGTVGCSFAFMLPVS
 TPPNSIAFASGHLLVKDMVRTGLLMNLMGVLLLSLAMNTWAQTIFQLGTFPDWADM
 YSVNVTALPPTLANDTFRTL

Applications

Enzyme-linked Immunoabsorbent Assay; Western Blot (Recombinant protein);
 Antibody Production; Protein Array

Notes

Best use within three months from the date of receipt of this protein

Storage

Store at -80 centigrade. Aliquot to avoid repeated freezing and thawing.

GENE INFORMATION

Gene Name

SLC13A3 solute carrier family 13 (sodium-dependent dicarboxylate transporter),
 member 3 [Homo sapiens]

Official Symbol

SLC13A3

Synonyms

SLC13A3; NADC3; SDCT2; hNaDC3; naDC-3;

Gene ID

64849

mRNA Refseq

NM_001011554

Protein Refseq

NP_001011554

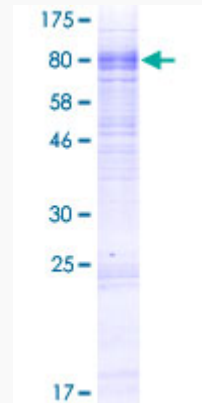
 Tel: 1-631-559-9269 1-516-512-3133

 Email: info@creative-biomart.com  Fax: 1-631-938-8127

 45-1 Ramsey Road, Shirley, NY 11967, USA

MIM 606411

UniProt ID Q8WWT9



12.5% SDS-PAGE Stained with Coomassie Blue.

 Tel: 1-631-559-9269 1-516-512-3133

 Email: info@creative-biomart.com  Fax: 1-631-938-8127

 45-1 Ramsey Road, Shirley, NY 11967, USA