

Recombinant Human SLC14A1 Full Length Transmembrane protein, His-tagged

Cat. No. SLC14A1-0835H Lot. No. (See product label)

SPECIFICATION

Product Overview

Recombinant Human SLC14A1 protein(A0A7L9QHR7)(1-389aa), fused with N-terminal His tag, was expressed in in vitro E. coli expression system.

Species

Human

Source

E.coli

ProteinLength

1-389aa

Form

If the delivery form is liquid, the default storage buffer is Tris/PBS-based buffer, 5%-50% glycerol.

If the delivery form is lyophilized powder, the buffer before lyophilization is Tris/PBS-based buffer, 6% Trehalose, pH 8.0.

Molecular Mass

44.0 kDa

AA Sequence

MEDSPTMVRVDSPTMVRGENQVSPCQGRRCFPKALGYVTGDMKELANQLKDKPV
 VLQFIDWILRGISQVVFVNNPVSGILILVGLLVQNPWWALTGWLGTVVSTLMALLLSQ
 DRSLIASGLYGYNATLVGVLMVFSKGDYFWWLLLPVCAMSMTCPHFSSALNSML
 SKWDLPVFTLPFNMALSMYLSATGHYNPFFPAKLVIPITTAPNISWSDLSALELLKSIP
 VGVGQIYGCDNPWTGGIFLGAILLSSPLMCLHAAIGSLLGIAAGLSLSAPFENIYFGLW
 GFNSSLACIAMGGMFALTWQTHLLALGCALFTAYLGVGMANFMAEVGLPACTWP
 FCLATLLFLIMTTKNSNIYKMPLSKVTYPEENRIFYLQAKKRMVESPL-

 Tel: 1-631-559-9269 1-516-512-3133

 Email: info@creative-biomart.com  Fax: 1-631-938-8127

 45-1 Ramsey Road, Shirley, NY 11967, USA

Purity	Greater than 90% as determined by SDS-PAGE.
Storage	Store at -20°C/-80°C upon receipt, aliquoting is necessary for mutiple use. Avoid repeated freeze-thaw cycles.
Reconstitution	Please reconstitute protein in deionized sterile water to a concentration of 0.1-1.0 mg/mL. We recommend to add 5-50% of glycerol (final concentration) and aliquot for long-term storage at -20°C/-80°C.

GENE INFORMATION

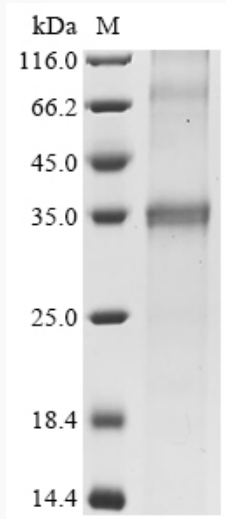
Gene Name	SLC14A1 solute carrier family 14 (urea transporter), member 1 (Kidd blood group) [Homo sapiens]
Official Symbol	SLC14A1
Synonyms	SLC14A1; solute carrier family 14 (urea transporter), member 1 (Kidd blood group); JK; urea transporter 1; HsT1341; RACH1; RACH2; SLC14A1 JK; urea transporter-B1; urea transporter, erythrocyte; urea transporter JK glycoprotein; UT1; UTE; HUT11; UT-B1; FLJ33745; FLJ41687;
Gene ID	6563
mRNA Refseq	NM_001128588
Protein Refseq	NP_001122060
MIM	613868
UniProt ID	Q13336

 Tel: 1-631-559-9269 1-516-512-3133

 Email: info@creative-biomart.com  Fax: 1-631-938-8127

 45-1 Ramsey Road, Shirley, NY 11967, USA

SDS-PAGE



 Tel: 1-631-559-9269 1-516-512-3133

 Email: info@creative-biomart.com  Fax: 1-631-938-8127

 45-1 Ramsey Road, Shirley, NY 11967, USA