

Recombinant Full Length Human SLC14A1 Protein, C-Flag-tagged

Cat. No. SLC14A1-1250HFL Lot. No. (See product label)

SPECIFICATION

Product Overview Recombinant Full Length Human SLC14A1 Protein, fused to Flag-tag at C-terminus, was expressed in Mammalian cells.

Species Human

Source Mammalian Cells

Description The protein encoded by this gene is a membrane transporter that mediates urea transport in erythrocytes. This gene forms the basis for the Kidd blood group system.

Form 25 mM Tris HCl, pH 7.3, 100 mM glycine, 10% glycerol.

Molecular Mass 42.3 kDa

AA Sequence

```
MEDSPTMVRVDSPTMVRGENQVSPCQGRRCFPKALGYVTGDMKELANQLKDKPV
VLQFIDWILRGISQVV FVNNPVSGILILVGLLVQNPWWALTGWLGTVVSTLMALLLSQ
DRSLIASGLYGYNATLVGVLMVAFSDKG DYFWWLLLPCAMSMTCPIFSSALNSVL
SKWDLPVFTLPFNMALSMYLSATGHYNPFFPAKLVIPTTAP NISWSDLSALELLKSIP
VGVGQIYGCDNPWTGGIFLGAILLSSPLMCLHAAIGSLLGIAAGLSLSAPFEN IYFGL
WGFNSSLACIAMGGMFALTWQTHLLALGCALFTAYLGVGMANFMAEVGLPACTW
PFCLATLLFL
IMTTKNSNIYKMPLSKVTYPEENRIFYLQAKKRMVESPLTRTRPLEQKLISEEDLAAN
DILDYKDDDDKV
```

 Tel: 1-631-559-9269 1-516-512-3133

 Email: info@creative-biomart.com  Fax: 1-631-938-8127

 45-1 Ramsey Road, Shirley, NY 11967, USA

Purity	> 80% as determined by SDS-PAGE and Coomassie blue staining.
Stability	Stable for 12 months from the date of receipt of the product under proper storage and handling conditions. Avoid repeated freeze-thaw cycles.
Storage	Store at -80 centigrade.
Concentration	>50 ug/mL as determined by microplate BCA method.
Preparation	Recombinant protein was captured through anti-DDK affinity column followed by conventional chromatography steps.
Protein Families	Transmembrane
Full Length	Full L.

GENE INFORMATION

Gene Name	SLC14A1 solute carrier family 14 member 1 (Kidd blood group) [Homo sapiens (human)]
Official Symbol	SLC14A1
Synonyms	JK; UT1; UTE; HUT11; Jk(a); Jk(b); RACH1; RACH2; UT-B1; HUT11A; HsT1341
Gene ID	6563
mRNA Refseq	NM_015865.7
Protein Refseq	NP_056949.4

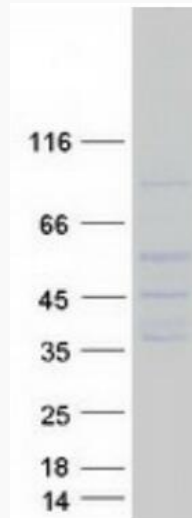
 Tel: 1-631-559-9269 1-516-512-3133

 Email: info@creative-biomart.com  Fax: 1-631-938-8127

 45-1 Ramsey Road, Shirley, NY 11967, USA

MIM 613868

UniProt ID Q13336



Coomassie blue staining of purified SLC14A1 protein.

 Tel: 1-631-559-9269 1-516-512-3133

 Email: info@creative-biomart.com  Fax: 1-631-938-8127

 45-1 Ramsey Road, Shirley, NY 11967, USA