

Recombinant Human SLC14A1 protein, GST-tagged

Cat. No. SLC14A1-13H Lot. No. (See product label)

SPECIFICATION

Product Overview	Recombinant Human SLC14A1(1 a.a. - 389 a.a.) fused with GST tag at N-terminal was expressed in Wheat Germ.
Species	Human
Source	Wheat Germ
ProteinLength	1-389 a.a.
Description	The protein encoded by this gene is a membrane transporter that mediates urea transport in erythrocytes. This gene forms the basis for the Kidd blood group system.
Form	50 mM Tris-HCl, 10 mM reduced Glutathione, pH=8.0 in the elution buffer.
Molecular Mass	68.9 kDa
AA Sequence	MEDSPTMVRVDSPTMVRGENQVSPCQGRRCFPKALGYVTGDMKELANQLKDKPV VLQFIDWILRGISQVVFVNNPVSGILILVGLLVQNPWWALTGWLGTVVSTLMALLLSQ DRSLIASGLYGYNATLVGVLMVFSKGDYFWWLLLPVCAMSMTCPIFSSALNSVLS KWDLPVFTLPFNMALSMYLSATGHYNPFFPAKLVIPITTAPNISWSDLSALELLKSIPV GVGQIYGCDNPWTGGIFLGAILLSSPLMCLHAAIGSLLGIAAGLSLSAPFENIYFGLW GFNSSLACIAMGGMFALTWQTHLLALGCALFTAYLGVGGMANFMAEVGLPACTWP FCLATLLFLIMTTKNSNIYKMPLSKVTYPEENRIFYLQAKKRMVESPL
Applications	Enzyme-linked Immunoabsorbent Assay; Western Blot (Recombinant protein);

 Tel: 1-631-559-9269 1-516-512-3133

 Email: info@creative-biomart.com  Fax: 1-631-938-8127

 45-1 Ramsey Road, Shirley, NY 11967, USA

Antibody Production; Protein Array

Notes Best use within three months from the date of receipt of this protein.

Storage Store at -80 centigrade. Aliquot to avoid repeated freezing and thawing.

GENE INFORMATION

Gene Name SLC14A1 solute carrier family 14 (urea transporter), member 1 (Kidd blood group) [Homo sapiens]

Official Symbol SLC14A1

Synonyms SLC14A1; solute carrier family 14 (urea transporter), member 1 (Kidd blood group); JK; urea transporter 1; HsT1341; RACH1; RACH2; SLC14A1 JK; urea transporter-B1; urea transporter, erythrocyte; urea transporter JK glycoprotein; UT1; UTE; HUT11; UT-B1; FLJ33745; FLJ41687;

Gene ID 6563

mRNA Refseq NM_001128588

Protein Refseq NP_001122060

MIM 613868

UniProt ID Q13336

Chromosome Location 18q11-q12

Pathway SLC-mediated transmembrane transport, organism-specific biosystem;

 Tel: 1-631-559-9269 1-516-512-3133

 Email: info@creative-biomart.com  Fax: 1-631-938-8127

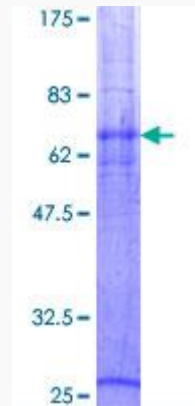
 45-1 Ramsey Road, Shirley, NY 11967, USA



Transmembrane transport of small molecules, organism-specific biosystem; Transport of glucose and other sugars, bile salts and organic acids, metal ions and amine compounds, organism-specific biosystem;

Function

urea transmembrane transporter activity; water transmembrane transporter activity;



Tel: 1-631-559-9269 1-516-512-3133

Email: info@creative-biomart.com Fax: 1-631-938-8127

45-1 Ramsey Road, Shirley, NY 11967, USA