

Recombinant Human SLC14A1 Protein, Myc/DDK-tagged, C13 and N15-labeled

Cat. No. SLC14A1-1924H Lot. No. (See product label)

SPECIFICATION

Product Overview	SLC14A1 MS Standard C13 and N15-labeled recombinant protein (NP_056949) with a C-terminal MYC/DDK tag, was expressed in HEK293 cells.
Species	Human
Source	HEK293
Description	The protein encoded by this gene is a membrane transporter that mediates urea transport in erythrocytes. This gene forms the basis for the Kidd blood group system.
Molecular Mass	42.5 kDa
AA Sequence	MEDSPTMVRVDSPTMVRGENQVSPCQGRRCFPKALGYVTGDMKELANQLKDKPV VLQFIDWILRGISQVVFVNNPVSGILILVGLLVQNPWWALTGWLGTVVSTLMALLLSQ DRSLIASGLYGYNATLVGVLMVFSKGDYFWWLLLPVCAMSMTCPIFSSALNSVLS KWDLPVFTLPFNMALSMYLSATGHYNPFFPAKLVIPITTAPNISWSDLSALELLKSIPV GVGQIYGCDNPWTGGIFLGAILLSSPLMCLHAAIGSLLGIAAGLSLSAPFENIYFGLW GFNSSLACIAMGGMFMALTWQTHLLALGCALFTAYLGVGMANFMAEVGLPACTWP FCLATLLFLIMTTKNSNIYKMPLSKVTYPEENRIFYLQAKKRMVESPLTRTRPLEQKLI SEEDLAANDILDYKDDDDKV
Purity	> 80% as determined by SDS-PAGE and Coomassie blue staining
Stability	Stable for 3 months from receipt of products under proper storage and handling

 Tel: 1-631-559-9269 1-516-512-3133

 Email: info@creative-biomart.com  Fax: 1-631-938-8127

 45-1 Ramsey Road, Shirley, NY 11967, USA

conditions.

Storage Store at -80 centigrade. Avoid repeated freeze-thaw cycles.

Concentration 50 µg/mL as determined by BCA

Storage Buffer 100 mM glycine, 25 mM Tris-HCl, pH 7.3.

GENE INFORMATION

Gene Name SLC14A1 solute carrier family 14 member 1 (Kidd blood group) [Homo sapiens (human)]

Official Symbol SLC14A1

Synonyms SLC14A1; solute carrier family 14 (urea transporter), member 1 (Kidd blood group); JK; urea transporter 1; HsT1341; RACH1; RACH2; SLC14A1 JK; urea transporter-B1; urea transporter, erythrocyte; urea transporter JK glycoprotein; UT1; UTE; HUT11; UT-B1; FLJ33745; FLJ41687;

Gene ID 6563

mRNA Refseq NM_015865

Protein Refseq NP_056949

MIM 613868

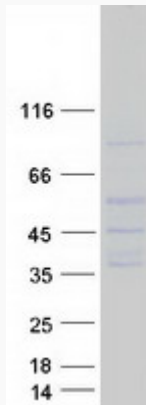
UniProt ID Q13336

 Tel: 1-631-559-9269 1-516-512-3133

 Email: info@creative-biomart.com  Fax: 1-631-938-8127

 45-1 Ramsey Road, Shirley, NY 11967, USA

SDS-PAGE



 Tel: 1-631-559-9269 1-516-512-3133

 Email: info@creative-biomart.com  Fax: 1-631-938-8127

 45-1 Ramsey Road, Shirley, NY 11967, USA