

Recombinant Human SLC15A1 protein, His & T7-tagged

Cat. No. SLC15A1-1209H Lot. No. (See product label)

SPECIFICATION

Product Overview	Recombinant Human SLC15A1 aa. (Asp383~Gln584 (Accession # P46059) fused with N-terminal His & T7 tag was produced in E. coli cells.
Species	Human
Source	E.coli
ProteinLength	Asp383~Gln584
Description	This gene encodes an intestinal hydrogen peptide cotransporter that is a member of the solute carrier family 15. The encoded protein is localized to the brush border membrane of the intestinal epithelium and mediates the uptake of di- and tripeptides from the lumen into the enterocytes. This protein plays an important role in the uptake and digestion of dietary proteins. This protein also facilitates the absorption of numerous peptidomimetic drugs.
Form	Freeze-dried powder
Molecular Mass	Predicted Molecular Mass: 26.2kDa.
Endotoxin	<1.0EU per 1g (determined by the LAL method)
Purity	>95%
Characteristic	The isoelectric point is 6.9.

 Tel: 1-631-559-9269 1-516-512-3133

 Email: info@creative-biomart.com  Fax: 1-631-938-8127

 45-1 Ramsey Road, Shirley, NY 11967, USA

Applications	SDS-PAGE; WB; ELISA; IP.
Stability	The thermal stability is described by the loss rate of the target protein. The loss rate was determined by accelerated thermal degradation test, that is, incubate the protein at 37°C for 48h, and no obvious degradation and precipitation were observed. (Referring from China Biological Products Standard, which was calculated by the Arrhenius equation.) The loss of this protein is less than 5% within the expiration date under appropriate storage condition.
Storage	Avoid repeated freeze/thaw cycles. Store at 2-8°C for one month. Aliquot and store at -80°C for 12 months.
Storage buffer	Supplied as lyophilized form in 20mM Tris, 150mM NaCl, pH8.0, containing 1mM EDTA, 1mM DTT, 0.01% sarcosyl, 5% trehalose, and preservative.
Reconstitution	Reconstitute in sterile ddH ₂ O.
GENE INFORMATION	
Gene Name	SLC15A1 solute carrier family 15 member 1 [Homo sapiens (human)]
Official Symbol	SLC15A1
Synonyms	SLC15A1; solute carrier family 15 member 1; PEPT1; HPECT1; HPEPT1; solute carrier family 15 member 1; Caco-2 oligopeptide transporter; intestinal H ⁺ /peptide cotransporter; macrophage oligopeptide transporter PEPT1; oligopeptide transporter, small intestine isoform; peptide transporter 1; solute carrier family 15 (oligopeptide transporter), member 1
Gene ID	6564

 Tel: 1-631-559-9269 1-516-512-3133

 Email: info@creative-biomart.com  Fax: 1-631-938-8127

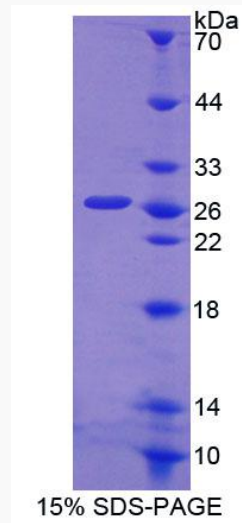
 45-1 Ramsey Road, Shirley, NY 11967, USA

mRNA Refseq [NM_005073.3](#)

Protein Refseq [NP_005064.1](#)

UniProt ID [P46059](#)

SDS-PAGE



 Tel: 1-631-559-9269 1-516-512-3133

 Email: info@creative-biomart.com  Fax: 1-631-938-8127

 45-1 Ramsey Road, Shirley, NY 11967, USA