

Recombinant Human SLC16A1 Protein, GST-tagged

Cat. No. SLC16A1-54H Lot. No. (See product label)

SPECIFICATION

Product Overview	Recombinant Human SLC16A1 Protein is produced by Wheat Germ (in vitro) expression system. This protein is fused with a GST tag at the N-terminal.
Species	Human
Source	Wheat Germ
Protein Length	1-500 a.a.
Description	The SLC16A1 gene encodes a monocarboxylate transporter (MCT1) that mediates the movement of lactate and pyruvate across cell membranes. Import and export of these substrates by tissues such as erythrocytes, muscle, intestine, and kidney are ascribed largely to the action of a proton-coupled MCT (Garcia et al., 1994).
Form	50 mM Tris-HCl, 10 mM reduced Glutathione, pH=8.0 in the elution buffer.
Molecular Mass	80.4 kDa
AA Sequence	MPPAVGGPVGYTTPDGGWGWAVVIGAFISIGFSYAFPKSITVFFKEIEGIFHATTSEV SWISSIMLAVMYGGGPISSILVNKYGSRIVMIVGGCLSGCLIAASFCNTVQQLYVCIG VIGGLGLAFNLPALTMIGKYFYKRRPLANGLAMAGSPVFLCTLAPLNQVFFGIFGW RGSFLILGLLLLNCCVAGALMRPIGPKPTKAGKDKSKASLEKAGKSGVKKDLHDANT DLIGRHPKQEKRSVFQTINQFLDLTLFTHRGLLYLSGNVIMFFGLFAPLVFLSSYGKS QHYSSEKSAFLLSILAFVDMVARPSMGLVANTKPIRPRIQYFFAASVVANGVCHMLA PLSTTYVGFCVYAGFFGFAGWLSSVLFETLMDLVGPQRFSSAVGLVTIVECCPVLL

 Tel: 1-631-559-9269 1-516-512-3133

 Email: info@creative-biomart.com  Fax: 1-631-938-8127

 45-1 Ramsey Road, Shirley, NY 11967, USA



GPPLLGR LNDMYGDYKYTYWACGVVLIISGIYLFIGMGINYRLLAKEQKANEQKKESK
EEETSIDVAGKPNEVTKAAESPDQKDTEGGPKEEESPV

Applications Enzyme-linked Immunoabsorbent Assay;
Western Blot (Recombinant protein);
Antibody Production;
Protein Array

Notes Best use within three months from the date of receipt of this protein.

Storage Store at -80 centigrade. Aliquot to avoid repeated freezing and thawing.

GENE INFORMATION

Gene Name SLC16A1 solute carrier family 16, member 1 (monocarboxylic acid transporter 1) [Homo sapiens]

Official Symbol SLC16A1

Synonyms SLC16A1; solute carrier family 16, member 1 (monocarboxylic acid transporter 1); MCT; MCT1; MCT 1; HHF7; FLJ36745; MGC44475;

Gene ID 6566

mRNA Refseq NM_001166496

Protein Refseq NP_001159968

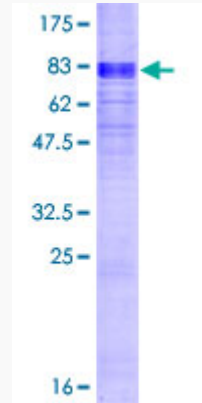
MIM 600682

UniProt ID P53985

Tel: 1-631-559-9269 1-516-512-3133

Email: info@creative-biomart.com Fax: 1-631-938-8127

45-1 Ramsey Road, Shirley, NY 11967, USA



12.5% SDS-PAGE Stained with Coomassie Blue.

 Tel: 1-631-559-9269 1-516-512-3133

 Email: info@creative-biomart.com  Fax: 1-631-938-8127

 45-1 Ramsey Road, Shirley, NY 11967, USA