

Recombinant Human SLC16A1 Protein (Asn444-Val500), N-His tagged

Cat. No. SLC16A1-6309H Lot. No. (See product label)

SPECIFICATION

Product Overview	Recombinant human SLC16A1 (Asn444-Val500) fused with the N-His tag was expressed in E. coli.
Species	Human
Source	E.coli
ProteinLength	Asn444-Val500
Form	Lyophilized powder/frozen liquid
Molecular Mass	8.61 kDa
Purity	> 90 % as determined by SDS-PAGE
Notes	For research use only.
Storage	Use a manual defrost freezer and avoid repeated freeze thaw cycles. Store at 2 to 8 centigrade for one week. Store at -20 to -80 centigrade for twelve months from the date of receipt.
Storage Buffer	0.01M PBS, pH 7.4, 0.02 % NLS
Reconstitution	Reconstitute in sterile water for a stock solution.

 Tel: 1-631-559-9269 1-516-512-3133

 Email: info@creative-biomart.com  Fax: 1-631-938-8127

 45-1 Ramsey Road, Shirley, NY 11967, USA

Shipping They are shipped out with dry ice/blue ice unless customers require otherwise.

GENE INFORMATION

Gene Name SLC16A1 solute carrier family 16, member 1 (monocarboxylic acid transporter 1) [Homo sapiens (human)]

Official Symbol SLC16A1

Synonyms SLC16A1; solute carrier family 16, member 1 (monocarboxylic acid transporter 1); solute carrier family 16 (monocarboxylic acid transporters), member 1; monocarboxylate transporter 1; MCT; MCT1; MCT 1; solute carrier family 16 member 1; HHF7; FLJ36745; MGC44475;

Gene ID 6566

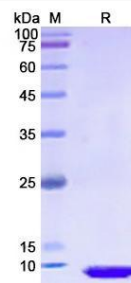
mRNA Refseq NM_001166496

Protein Refseq NP_001159968

MIM 600682

UniProt ID P53985

SDS-PAGE



 Tel: 1-631-559-9269 1-516-512-3133

 Email: info@creative-biomart.com  Fax: 1-631-938-8127

 45-1 Ramsey Road, Shirley, NY 11967, USA