

Recombinant Human SLC16A1 Protein, Myc/DDK-tagged, C13 and N15-labeled

Cat. No. SLC16A1-6558H Lot. No. (See product label)

SPECIFICATION

Product Overview

SLC16A1 MS Standard C13 and N15-labeled recombinant protein (NP_003042) with a C-terminal MYC/DDK tag, was expressed in HEK293 cells.

Species

Human

Source

HEK293

Description

The protein encoded by this gene is a proton-linked monocarboxylate transporter that catalyzes the movement of many monocarboxylates, such as lactate and pyruvate, across the plasma membrane. Mutations in this gene are associated with erythrocyte lactate transporter defect. Alternatively spliced transcript variants have been found for this gene.

Molecular Mass

53.9 kDa

AA Sequence

MPPAVGGPVGYTTPDGGGWAVVIGAFISIGFSYAFPKSITVFFKEIEGIFHATTSEV
 SWISSIMLAVMYGGGPISSILVNKYGSRIVMIVGGCLSGCGLIAASFCNTVQQLYVCIG
 VIGGLGLAFNLPALTMIGKYFYKRRPLANGLAMAGSPVFLCTLAPLNQVFFGIFGW
 RGSFLILGLLLLNCCVAGALMRPIGPKPTKAGKDKSKASLEKAGKSGVKKDLHDANT
 DLIGRHPKQEKRSVFQQTINQFLDLTLFTHRGFLLYLSGNVIMFFGLFAPLVFLSSYGKS
 QHYSSEKSAFLLSILAFVDMVARPSMGLVANTKPIRPRIQYFFAASVVANGVCHMLA
 PLSTTYVGFVYAGFFGFAGWLSSVLFETLMDLVGPQRFSSAVGLVTIVECCPVLL
 GPPLLGRLLNDMYGDYKYTYWACGVVLIISGIYLFIMGINYRLLAKEQKANEQKESK

 Tel: 1-631-559-9269 1-516-512-3133

 Email: info@creative-biomart.com  Fax: 1-631-938-8127

 45-1 Ramsey Road, Shirley, NY 11967, USA

EEETSIDVAGKPNEVTKAAESPDQKDTDGGPKKEEESPVTRTRPLEQKLISEEDLAAN
DILDYKDDDDKV

Purity > 80% as determined by SDS-PAGE and Coomassie blue staining

Stability Stable for 3 months from receipt of products under proper storage and handling conditions.

Storage Store at -80 centigrade. Avoid repeated freeze-thaw cycles.

Concentration 50 µg/mL as determined by BCA

Storage Buffer 100 mM glycine, 25 mM Tris-HCl, pH 7.3.

GENE INFORMATION

Gene Name [SLC16A1 solute carrier family 16 member 1 \[Homo sapiens \(human\) \]](#)

Official Symbol [SLC16A1](#)

Synonyms SLC16A1; solute carrier family 16, member 1 (monocarboxylic acid transporter 1); solute carrier family 16 (monocarboxylic acid transporters), member 1; monocarboxylate transporter 1; MCT; MCT1; MCT 1; solute carrier family 16 member 1; HHF7; FLJ36745; MGC44475;

Gene ID [6566](#)

mRNA Refseq [NM_003051](#)

Protein Refseq [NP_003042](#)

 Tel: 1-631-559-9269 1-516-512-3133

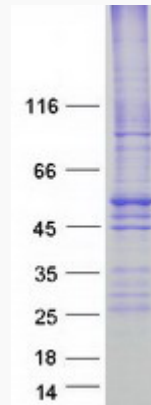
 Email: info@creative-biomart.com  Fax: 1-631-938-8127

 45-1 Ramsey Road, Shirley, NY 11967, USA

MIM 600682

UniProt ID P53985

SDS-PAGE



 Tel: 1-631-559-9269 1-516-512-3133

 Email: info@creative-biomart.com  Fax: 1-631-938-8127

 45-1 Ramsey Road, Shirley, NY 11967, USA