

Recombinant Full Length Human SLC16A1 Protein, C-Flag-tagged

Cat. No. SLC16A1-953HFL **Lot. No.** (See product label)

SPECIFICATION

Product Overview	Recombinant Full Length Human SLC16A1 Protein, fused to Flag-tag at C-terminus, was expressed in Mammalian cells.
Species	Human
Source	Mammalian Cells
Description	The protein encoded by this gene is a proton-linked monocarboxylate transporter that catalyzes the movement of many monocarboxylates, such as lactate and pyruvate, across the plasma membrane. Mutations in this gene are associated with erythrocyte lactate transporter defect. Alternatively spliced transcript variants have been found for this gene.
Form	25 mM Tris HCl, pH 7.3, 100 mM glycine, 10% glycerol.
Molecular Mass	53.8 kDa
AA Sequence	MPPAVGGPVGYPDGGGWAVVIGAFISIGFSYAFPKSITVFFKEIEGIFHATTSEV SWISSIMLAVMY GGGPISSILVNKYGSRIVMIVGGCLSGCGLIAASFCNTVQQLYVCI GVIGGLGLAFNLPALTMIGKYFY KRRPLANGLAMAGSPVFLCTLAPLNQVFFGIFG WRGSFLILGLLLLNCCVAGALMRPIGPKPTKAGKDKS KASLEKAGKSGVKKDLHDA NTDLIGRHPKQEKRSVFQTINQFLDLTLFTHRGFLLYLSGNVIMFFGLFAP LVFLSSY GKSQHYSSEKSAFLLSILAFVDMVARPSMGLVANTKPIRPRIQYFFAASVVANGVCH MLAPLS TTYVGFVYAGFFGFAGWLSSVLFETLMDLVGPQRFSSAVGLVTIVECC

 Tel: 1-631-559-9269 1-516-512-3133

 Email: info@creative-biomart.com  Fax: 1-631-938-8127

 45-1 Ramsey Road, Shirley, NY 11967, USA

PVLLGPPLLGRNLNDMYGDYK YTYWACGVVLIISGIYLFIMGINYRLLAKEQKANEQK
 KESKEEETSIDVAGKPNEVTKAAESPDQKDTD
 GGPKEEESPVTRTRPLEQKLISEEDLAANDILDYKDDDDKV

Purity > 80% as determined by SDS-PAGE and Coomassie blue staining.

Stability Stable for 12 months from the date of receipt of the product under proper storage and handling conditions. Avoid repeated freeze-thaw cycles.

Storage Store at -80 centigrade.

Concentration >50 ug/mL as determined by microplate BCA method.

Preparation Recombinant protein was captured through anti-DDK affinity column followed by conventional chromatography steps.

Protein Families Transmembrane

Full Length Full L.

GENE INFORMATION

Gene Name [SLC16A1 solute carrier family 16 member 1 \[Homo sapiens \(human\) \]](#)

Official Symbol [SLC16A1](#)

Synonyms MCT; HHF7; MCT1; MCT1D

Gene ID [6566](#)

mRNA Refseq [NM_003051.4](#)

 Tel: 1-631-559-9269 1-516-512-3133

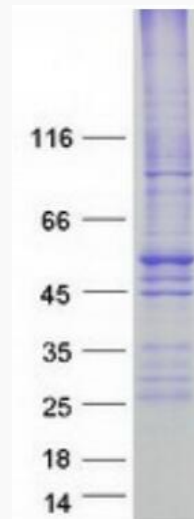
 Email: info@creative-biomart.com  Fax: 1-631-938-8127

 45-1 Ramsey Road, Shirley, NY 11967, USA

Protein Refseq NP_003042.3

MIM 600682

UniProt ID P53985



Coomassie blue staining of purified SLC16A1 protein.

 Tel: 1-631-559-9269 1-516-512-3133

 Email: info@creative-biomart.com  Fax: 1-631-938-8127

 45-1 Ramsey Road, Shirley, NY 11967, USA