

Recombinant Human SLC16A13 Protein, Myc/DDK-tagged, C13 and N15-labeled

Cat. No. SLC16A13-2677H **Lot. No.** (See product label)

SPECIFICATION

Product Overview	SLC16A13 MS Standard C13 and N15-labeled recombinant protein (NP_963860) with a C-terminal MYC/DDK tag, was expressed in HEK293 cells.
Species	Human
Source	HEK293
Description	Proton-linked monocarboxylate transporter. May catalyze the transport of monocarboxylates across the plasma membrane.
Molecular Mass	44.8 kDa
AA Sequence	MARRTEPPDGGWGWVVLSAFFQSALVFGVLRVSGVFFVEFVAAFEEQAARVSWI ASIGIAVQQFGSPVGSALSTKFGPRPVVMTGGILAALGMLLASFATSLTHLYLSIGLLS GSGWALTFAPTLACLSCYFSRRRSLATGLALTGVGLSSFTFAPFFQWLLSHYAWRG LLLLVSALS LHLVACGALLRPPSLAEDPAVGGPRAQLTSLHHGPFLRYTVALTLINT GYFIPYLHLVAHLQDLWDPLPAAFLLSVVAISDLVGRVVSGWLGDVPGPVTRLLM LWTTLTGVSLALFPVAQAPTALVALAVAYGFTSGALAPLAFSVLPELIGTRRIYCGGLGL LQMIESIGLLGPPLSGYLRDVTGNYTASFVVAGAFLLSGSGILLTPHFFCFSTTTSG PQDLVTEALDTKVPLPKEGLEEDTRTRPLEQKLISEEDLAANDILDYKDDDDKV
Purity	> 80% as determined by SDS-PAGE and Coomassie blue staining
Stability	Stable for 3 months from receipt of products under proper storage and handling

 Tel: 1-631-559-9269 1-516-512-3133

 Email: info@creative-biomart.com  Fax: 1-631-938-8127

 45-1 Ramsey Road, Shirley, NY 11967, USA

conditions.

Storage Store at -80 centigrade. Avoid repeated freeze-thaw cycles.

Concentration 50 µg/mL as determined by BCA

Storage Buffer 100 mM glycine, 25 mM Tris-HCl, pH 7.3.

GENE INFORMATION

Gene Name [SLC16A13 solute carrier family 16 member 13 \[Homo sapiens \(human\) \]](#)

Official Symbol [SLC16A13](#)

Synonyms SLC16A13; solute carrier family 16, member 13 (monocarboxylic acid transporter 13); solute carrier family 16 (monocarboxylic acid transporters), member 13; monocarboxylate transporter 13; MCT13; MCT 13; solute carrier family 16 member 13;

Gene ID [201232](#)

mRNA Refseq [NM_201566](#)

Protein Refseq [NP_963860](#)

UniProt ID [Q7RTY0](#)

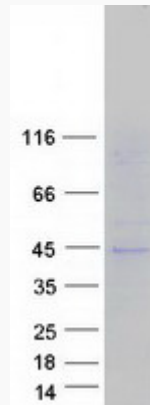
 Tel: 1-631-559-9269 1-516-512-3133

 Email: info@creative-biomart.com  Fax: 1-631-938-8127

 45-1 Ramsey Road, Shirley, NY 11967, USA



SDS-PAGE



Tel: 1-631-559-9269 1-516-512-3133

Email: info@creative-biomart.com Fax: 1-631-938-8127

45-1 Ramsey Road, Shirley, NY 11967, USA