

Recombinant Full Length Human SLC18A2 Protein, C-Flag-tagged

Cat. No. SLC18A2-1559HFL Lot. No. (See product label)

SPECIFICATION

Product Overview	Recombinant Full Length Human SLC18A2 Protein, fused to Flag-tag at C-terminus, was expressed in Mammalian cells.
Species	Human
Source	Mammalian Cells
Description	This gene encodes an transmembrane protein that functions as an ATP-dependent transporter of monoamines, such as dopamine, norepinephrine, serotonin, and histamine. This protein transports amine neurotransmitters into synaptic vesicles. Polymorphisms in this gene may be associated with schizophrenia, bipolar disorder, and other neurological/psychiatric ailments.
Form	25 mM Tris HCl, pH 7.3, 100 mM glycine, 10% glycerol.
Molecular Mass	55.5 kDa
AA Sequence	<p>MALSELALVRWLQESRRSRKILFIVFLALLLDNMLLTVVVPPIPSYLYSIKHEKNATEIQ TARPVHTAS ISDSFQSIFSYYDNSTMVTGNATRDLT LHQTATQHMVTNASAVPSDC PSEDKDLLNENVQVGLLFASKAT VQLITNPFIGLLTNRIGYPIPIFAGFCIMFVSTIMFA FSSSYAFLLIARSLQGIGSSCSSVAGMGMLASV YTDDEERGNVMGIALGGLAMGVL VGPPFGSVLYEFVGKTAPFLVLAALVLLDGAIQLFVLQPSRVQPESQ KGTPLTLLK DPYILIAAGSICFANMGIAMLEPALPIWMMETMCSRKWQLGVAFLPASISYLGITNIFGI LAHKMGRWLCALLGMIIVGVSILCIPFAKNIYGLIAPNFGVGFAGMVDSSMMPIMGYL</p>

 Tel: 1-631-559-9269 1-516-512-3133

 Email: info@creative-biomart.com  Fax: 1-631-938-8127

 45-1 Ramsey Road, Shirley, NY 11967, USA



VDLRHVSVYGS VYAIADVAFCMGYAIGPSAGGAIKAIGFPWLMTIIGIIDILFAPLCFF
LRSPPAKEEKMAILMDHNCPI
KTKMYTQNNIQSYPIGEDEESESDSGPTRTRRLEQKLISEEDLAANDILDYKDDDDKV

Purity > 80% as determined by SDS-PAGE and Coomassie blue staining.

Stability Stable for 12 months from the date of receipt of the product under proper storage and handling conditions. Avoid repeated freeze-thaw cycles.

Storage Store at -80 centigrade.

Concentration >50 ug/mL as determined by microplate BCA method.

Preparation Recombinant protein was captured through anti-DDK affinity column followed by conventional chromatography steps.

Protein Families Transmembrane

Protein Pathways Parkinson's disease

Full Length Full L.

GENE INFORMATION

Gene Name SLC18A2 solute carrier family 18 member A2 [Homo sapiens (human)]

Official Symbol SLC18A2

Synonyms SVAT; SVMT; VAT2; VMAT2; PKDYS2

Gene ID 6571

Tel: 1-631-559-9269 1-516-512-3133

Email: info@creative-biomart.com Fax: 1-631-938-8127

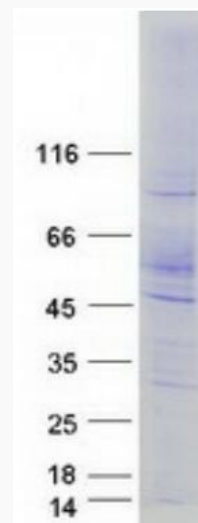
45-1 Ramsey Road, Shirley, NY 11967, USA

mRNA Refseq [NM_003054.6](#)

Protein Refseq [NP_003045.2](#)

MIM [193001](#)

UniProt ID [Q05940](#)



Coomassie blue staining of purified SLC18A2 protein.

 Tel: 1-631-559-9269 1-516-512-3133

 Email: info@creative-biomart.com  Fax: 1-631-938-8127

 45-1 Ramsey Road, Shirley, NY 11967, USA