

Recombinant Human SLC18A2 Protein, His-tagged

Cat. No. SLC18A2-15H Lot. No. (See product label)

SPECIFICATION

Product Overview	Recombinant Human SLC18A2 Protein(Met1~Trp328), fused with N-terminal His tag, was expressed in E. coli.
Species	Human
Source	E.coli
ProteinLength	Met1~Trp328
Form	20mM Tris, 150mM NaCl, pH8.0, containing 1mM EDTA, 1mM DTT, 0.01% SKL, 5% Trehalose and Proclin300.
Storage	Avoid repeated freeze/thaw cycles. Store at 2-8°C for one month. Aliquot and store at -80°C for 12 months.
Molecular Mass	35kDa
Endotoxin	<1.0EU per 1g (determined by the LAL method)
Purity	> 97%

GENE INFORMATION

Official Symbol SLC18A2

 Tel: 1-631-559-9269 1-516-512-3133

 Email: info@creative-biomart.com  Fax: 1-631-938-8127

 45-1 Ramsey Road, Shirley, NY 11967, USA

Synonyms SLC18A2; solute carrier family 18 (vesicular monoamine), member 2; VMAT2; synaptic vesicular amine transporter; SVAT; SVMT; monoamine transporter; vesicular amine transporter 2; vesicle monoamine/H⁺ antiporter; solute carrier family 18 member 2; vesicle monoamine transporter type 2; monoamine neurotransmitter transporter; VAT2; MGC26538; MGC120477; MGC120478;

Gene ID [6571](#)

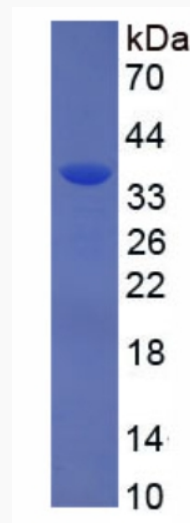
mRNA Refseq [NM_003054](#)

Protein Refseq [NP_003045](#)

MIM [193001](#)

UniProt ID [Q05940](#)

SDS-PAGE



 Tel: 1-631-559-9269 1-516-512-3133

 Email: info@creative-biomart.com  Fax: 1-631-938-8127

 45-1 Ramsey Road, Shirley, NY 11967, USA